



ACCESS

assisting. improving. empowering.

Introduction

Brand positioning: values



ACCESS

assisting. improving. empowering.

After a yearlong process I am happy to introduce the new ACCESS brand. This initiative included developing and leading a complete rebranding of the organization. The goal was to create a more cohesive brand story and express the organization's passion for serving the community.

ACCESS advocates on behalf of Arab immigrants and others, assisting in acclimating people to the U.S. by breaking down linguistic and cultural barriers. Historically ACCESS has primarily served the Arab community. Over the last 39 years, the organization has evolved and grown to extend its outreach both locally and nationally. As part of the growth, ACCESS has expanded our outreach and programming across the U.S. and so a new brand was needed to project a unified national image, while still staying true to our Arab American heritage.

Branding is about translating our vision into a visual identity (look and feel), and vision is about looking into the future. The tagline *assisting. improving. empowering.* fully encompasses the spectrum of our initiatives to assist, with our goals to improve and empower.

The Communications & Marketing staff audited the entire organization. We looked at how our brand comes across and what our brand image represents. We examined everything about how we presented ourselves visually and in writing, including our logo, colors, photos and graphics. We wanted our brand image to be immediately recognizable, enticing and consistent across ACCESS programs.

The new brand materials reinforce and enhance our new brand story with a cohesive look, tone and feel that carries across the entire organization.

I'm as excited about our future as I am proud of ACCESS' past. ACCESS has always been a forward-thinking, progressive organization and our new logo reflects that we too are continuing to improve.

Hannan Deep
Communications & Marketing Director
ACCESS

Brand positioning: personality

Hopeful

ACCESS is built on a structure and foundation of hope. We see more than we feel so every individual has remarkable untapped potential that we can help realize. This hope is our driving force, and should be seen in all materials and communications in line with the American dream that has always been a part of our identity.

Compassionate

Since ACCESS is such a personal organization, loved messages would mean more to us than any other. It's not about people helping people - whether it is a word of encouragement or an everyday person making make an extra phone call for someone. Compassion is at the heart of everything we do, and we want ACCESS to be a conduit for reaching people for help.

Bold

This is a fundamental aim for the brand. Whereas before, the ACCESS brand was a passive voice, we feel it is imperative that we take a bolder stance. Not content to pass by, we want ACCESS to be a catalyst for change and a catalyst for reaching people for help.

Passionate

The ACCESS brand should reflect the passion of its people. The greatest strength of ACCESS is the passion of its people. All materials must evoke the sense of hope and optimism shared by the people of ACCESS. We want ACCESS to be a catalyst for reaching people for help.

Logo:

The new ACCESS logo represents several elements coming together to create a cohesive brand. The design represents the different elements of ACCESS coming together. The different pieces of the community coming together. And it is also representative of the mosaic style seen in the mission, with an organic and subtle feel.

The ACCESS logo



Logo rules:

The logo must always be used in its entirety.

The logo must always be used in its entirety.

The logo must always be used in its entirety.

The logo must always be used in its entirety.

The logo must always be used in its entirety.

The logo must always be used in its entirety.



Clearspace is equal to the height of the top portion of the ACCESS 'A' in the wordmark.

The clearspace includes the top three competing graphic elements such as the 'A' in the wordmark, the 'S' in the wordmark, and the 'S' in the wordmark.

The clearspace includes the top three competing graphic elements such as the 'A' in the wordmark, the 'S' in the wordmark, and the 'S' in the wordmark.

The clearspace includes the top three competing graphic elements such as the 'A' in the wordmark, the 'S' in the wordmark, and the 'S' in the wordmark.

The clearspace includes the top three competing graphic elements such as the 'A' in the wordmark, the 'S' in the wordmark, and the 'S' in the wordmark.

The clearspace includes the top three competing graphic elements such as the 'A' in the wordmark, the 'S' in the wordmark, and the 'S' in the wordmark.

The clearspace includes the top three competing graphic elements such as the 'A' in the wordmark, the 'S' in the wordmark, and the 'S' in the wordmark.

The clearspace includes the top three competing graphic elements such as the 'A' in the wordmark, the 'S' in the wordmark, and the 'S' in the wordmark.

The clearspace includes the top three competing graphic elements such as the 'A' in the wordmark, the 'S' in the wordmark, and the 'S' in the wordmark.

The clearspace includes the top three competing graphic elements such as the 'A' in the wordmark, the 'S' in the wordmark, and the 'S' in the wordmark.

The clearspace includes the top three competing graphic elements such as the 'A' in the wordmark, the 'S' in the wordmark, and the 'S' in the wordmark.

The clearspace includes the top three competing graphic elements such as the 'A' in the wordmark, the 'S' in the wordmark, and the 'S' in the wordmark.

The clearspace includes the top three competing graphic elements such as the 'A' in the wordmark, the 'S' in the wordmark, and the 'S' in the wordmark.

The clearspace includes the top three competing graphic elements such as the 'A' in the wordmark, the 'S' in the wordmark, and the 'S' in the wordmark.

The clearspace includes the top three competing graphic elements such as the 'A' in the wordmark, the 'S' in the wordmark, and the 'S' in the wordmark.

The clearspace includes the top three competing graphic elements such as the 'A' in the wordmark, the 'S' in the wordmark, and the 'S' in the wordmark.

The clearspace includes the top three competing graphic elements such as the 'A' in the wordmark, the 'S' in the wordmark, and the 'S' in the wordmark.

The clearspace includes the top three competing graphic elements such as the 'A' in the wordmark, the 'S' in the wordmark, and the 'S' in the wordmark.

The clearspace includes the top three competing graphic elements such as the 'A' in the wordmark, the 'S' in the wordmark, and the 'S' in the wordmark.

The clearspace includes the top three competing graphic elements such as the 'A' in the wordmark, the 'S' in the wordmark, and the 'S' in the wordmark.

The clearspace includes the top three competing graphic elements such as the 'A' in the wordmark, the 'S' in the wordmark, and the 'S' in the wordmark.

The clearspace includes the top three competing graphic elements such as the 'A' in the wordmark, the 'S' in the wordmark, and the 'S' in the wordmark.

The clearspace includes the top three competing graphic elements such as the 'A' in the wordmark, the 'S' in the wordmark, and the 'S' in the wordmark.

The clearspace includes the top three competing graphic elements such as the 'A' in the wordmark, the 'S' in the wordmark, and the 'S' in the wordmark.

The clearspace includes the top three competing graphic elements such as the 'A' in the wordmark, the 'S' in the wordmark, and the 'S' in the wordmark.

The clearspace includes the top three competing graphic elements such as the 'A' in the wordmark, the 'S' in the wordmark, and the 'S' in the wordmark.

The clearspace includes the top three competing graphic elements such as the 'A' in the wordmark, the 'S' in the wordmark, and the 'S' in the wordmark.

The clearspace includes the top three competing graphic elements such as the 'A' in the wordmark, the 'S' in the wordmark, and the 'S' in the wordmark.

The clearspace includes the top three competing graphic elements such as the 'A' in the wordmark, the 'S' in the wordmark, and the 'S' in the wordmark.



Clearspace is equal to the height of the top portion of the ACCESS 'A' in the wordmark.

The clearspace includes the top three competing graphic elements such as the 'A' in the wordmark, the 'S' in the wordmark, and the 'S' in the wordmark.

The clearspace includes the top three competing graphic elements such as the 'A' in the wordmark, the 'S' in the wordmark, and the 'S' in the wordmark.

The clearspace includes the top three competing graphic elements such as the 'A' in the wordmark, the 'S' in the wordmark, and the 'S' in the wordmark.

The clearspace includes the top three competing graphic elements such as the 'A' in the wordmark, the 'S' in the wordmark, and the 'S' in the wordmark.

The clearspace includes the top three competing graphic elements such as the 'A' in the wordmark, the 'S' in the wordmark, and the 'S' in the wordmark.

The clearspace includes the top three competing graphic elements such as the 'A' in the wordmark, the 'S' in the wordmark, and the 'S' in the wordmark.

The clearspace includes the top three competing graphic elements such as the 'A' in the wordmark, the 'S' in the wordmark, and the 'S' in the wordmark.

The clearspace includes the top three competing graphic elements such as the 'A' in the wordmark, the 'S' in the wordmark, and the 'S' in the wordmark.

The clearspace includes the top three competing graphic elements such as the 'A' in the wordmark, the 'S' in the wordmark, and the 'S' in the wordmark.

The clearspace includes the top three competing graphic elements such as the 'A' in the wordmark, the 'S' in the wordmark, and the 'S' in the wordmark.

The clearspace includes the top three competing graphic elements such as the 'A' in the wordmark, the 'S' in the wordmark, and the 'S' in the wordmark.

The clearspace includes the top three competing graphic elements such as the 'A' in the wordmark, the 'S' in the wordmark, and the 'S' in the wordmark.

The clearspace includes the top three competing graphic elements such as the 'A' in the wordmark, the 'S' in the wordmark, and the 'S' in the wordmark.

The clearspace includes the top three competing graphic elements such as the 'A' in the wordmark, the 'S' in the wordmark, and the 'S' in the wordmark.

The clearspace includes the top three competing graphic elements such as the 'A' in the wordmark, the 'S' in the wordmark, and the 'S' in the wordmark.

The clearspace includes the top three competing graphic elements such as the 'A' in the wordmark, the 'S' in the wordmark, and the 'S' in the wordmark.

The clearspace includes the top three competing graphic elements such as the 'A' in the wordmark, the 'S' in the wordmark, and the 'S' in the wordmark.

The clearspace includes the top three competing graphic elements such as the 'A' in the wordmark, the 'S' in the wordmark, and the 'S' in the wordmark.

The clearspace includes the top three competing graphic elements such as the 'A' in the wordmark, the 'S' in the wordmark, and the 'S' in the wordmark.

The clearspace includes the top three competing graphic elements such as the 'A' in the wordmark, the 'S' in the wordmark, and the 'S' in the wordmark.

The clearspace includes the top three competing graphic elements such as the 'A' in the wordmark, the 'S' in the wordmark, and the 'S' in the wordmark.



Table of Contents

2	A Message from the Board President	10	Youth & Education
3	A Message from the Executive Director	12	Social Services
4	Our Vision and Our Team	14	Community Health & Research Center
5	Milestones 2009-2010	19	Employment & Training
6	Treasurer's Report	22	National Network for Arab American Communities
8	Statistical Report and Demographics	24	Arab American National Museum
		27	Center for Arab American Philanthropy
		28	2009-2010 Donors
		34	Committee Members & Partners



Hussein Berry
Board President
ACCESS

A Message from the Board President

It has been a pleasure to serve as president of the ACCESS Board of Directors. I have been a part of ACCESS for as long as I can remember and proudly watched the organization expand from a single site in a single community into a service powerhouse for metro Detroit, while simultaneously increasing its national impact. My first year as president has been active and exciting as we launched many new initiatives that are fulfilling needs and strengthening this community.

With the new Youth & Family Services Center in full swing, a plethora of activities is offered that give children and adults a place to learn and grow. We provide ESL classes to 100 adults every semester and due to a strong demand, clients are placed on a waiting list. The 21st Century Community Learning Centers Program is active in nine schools with more than 600 students enrolled. After three years of hard work, ACCESS has successfully began its chapter in the national Head Start program. This state-of-the-art program promotes school readiness in preschoolers by enhancing their social skills and cognitive development.

This year, the Arab American National Museum (AANM) celebrated its 5th anniversary, a major milestone for any new enterprise, especially in these challenging economic times. The Museum's ability to inform and enlighten its audiences about the lives and contributions of Arab Americans reaches not only its 51,000 visitors each year, but also hundreds of thousands more who attend off-site events and enjoy Museum programming online. This year's Museum Gala was the most successful to date, drawing a diverse audience to experience modern Arab culture through the artistry of Syria's

*Creating a shared vision
and working to accomplish
a common mission moves
us forward together. Our
collectivity multiplies the
results of our individual efforts.*

Enana Dance Theater. The AANM helps ACCESS and the national Arab American community to shine!

Over the past year the Board of Directors has been instrumental in effectively guiding the creation and implementation of the ACCESS Strategic Plan. Creating a shared vision and working to accomplish a common mission moves us forward together. Our collectivity multiplies the results of our individual efforts. This plan has reinforced our beliefs in both the strength each employee brings to this organization and the critical role of partnership and collaboration. It is in those internal and external relationships that our defined values are most critical. Our values echo what we as individuals embrace when working together and with the community.

Board members, staff and volunteers continue to work together to accomplish the organization's goals, and to fulfill our commitment to advocating for and empowering individuals, families and communities. As ACCESS enters its 40th year of serving the community, I want to thank each and every one for your hard work and dedication in making this organization what it is today!

Hassan Jaber
Executive Director
ACCESS



A Message from the Executive Director

It has been a very busy and monumental year at ACCESS. The organization has made great strides that should not go unnoticed, especially during these times of economic uncertainty.

Following years of planning and fundraising, ACCESS opened the doors to its new, 32,050-sq. ft. Youth & Family Services Center. It is a place where children can learn and grow while their families are strengthened and empowered by culturally relevant programs and services. Further evidence of ACCESS' deep, personal commitment to our children and community is our collaboration with neighboring organizations to create and launch the ground-breaking Family Skills Program. This program strengthens child and family safety and well-being while reducing risk factors associated with negative outcomes.

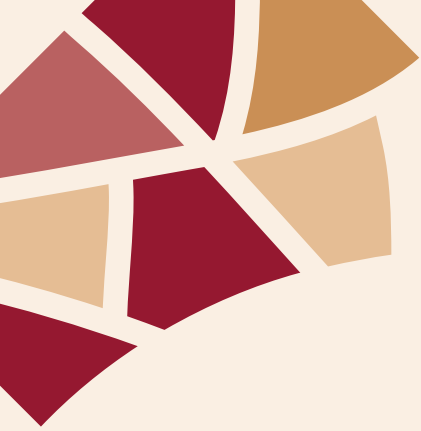
This year, ACCESS significantly expanded its reach by opening its first site in Macomb County. The ACCESS Community Health & Research Center of Macomb, located in Sterling Heights, provides health services for a growing population of refugees and Arab Americans who are moving into Oakland and Macomb counties. With 60 percent of Iraqi refugees settling into these counties, we

realize there's a strong need for our presence and services there.

With tens of thousands of clients passing through our doors annually, our passionate and experienced staff is prepared to effectively assist and offer much-needed hope to each client. While Michigan's unemployment rate was - at press time - the second highest in the nation, our Employment & Training Department continued to give clients the tools they need to succeed in the workforce. Last year, Employment & Training assisted more than 30,000 job-seekers as they worked toward achieving their employment goals.

We are meeting our nation's challenges with energy, renewed commitment and innovation. We continue to reinvent ourselves, build organizational capacity and effectiveness while focusing on our mission and living our values. These actions will strategically position us for our next 40 years.

I want to thank the staff for their hard work and dedication, and our board members for their expertise and support. We are also very grateful to the individuals, businesses and foundations that believe in our mission and, most importantly, believe in our community.



Our Vision

Our Vision for the Arab Community Center for Economic and Social Services (ACCESS) is to be an organization of people who are dedicated to empowering and enabling individuals, families and communities to lead informed, productive, culturally sensitive and fulfilling lives.

We see ACCESS as a vibrant organization that honors its Arab American heritage while serving as a nonprofit model of excellence as a social service agency. We see ACCESS as an organization dedicated to the support of community-building, actively focused on service to those in need within the broader community and to newly arrived immigrants, and as a strong advocate for cultural and social entrepreneurship, as well as the values of community service, healthy lifestyles, education and philanthropy.

Our Team

Executive Board

Hussein Berry
President

Wadad Abed
Vice President

Yasser Al-Soofi
Treasurer

Edward Bagale
English Secretary

Amal Berry-Brown
Arabic Secretary

David Allen
At-Large

Aoun Jaber
At-Large

Andrea Awada-Zeaiter
President Ex-Officio

Board of Directors

Ramzi Chraim
Amal David, Ph.D.

Rasha Demashkieh

Dennis Denno

J. Joseph Diederich

Debbie I. Dingell

Dr. Basim Dubaybo

Charlene Elder

Paul Good

Wassim Mahfouz

Mike Makki

Hassan Makled

Linda Mansour

Ron May

Ziad Ojakli

Robert G. Riney

Wafa Salah

Hussien Shousher

Gerald Smith

James Stokes

William Swor

EMERITUS BOARD MEMBERS

Ali Baleed Almaklani

Barbara Aswad, Ph.D.

Linda Hallick

George Khoury

Noel J. Saleh

Executive Staff

Hassan Jaber
Executive Director

Maha Freij
Deputy Executive Director & Chief Financial Officer

John Burl Artis, Ph.D.
Chief Operating Officer

Anan Ameri, Ph.D.
Arab American National Museum Director

Rashid Barkaji
Information Technology Director

Abdallah Boumediene
Community Health & Research Center Operations Director

Amne Darwish-Talab
Social Services Director (East Dearborn Office)

Hannan Deep
Communications & Marketing Director

Brigitte Fawaz-Anouti
Social Services Director (Main Office) and Special Projects

Najwa Hadous
Employment & Training Director

Adnan Hammad, Ph.D.
Senior Director, Community Health & Research Center

Mosein Hussein
Human Resources Director

Sonia Harb, MSW, CSW
Senior Director, Employment & Training and Youth & Education

Jamie Kim
Center for Arab American Philanthropy Director

Wisam Qasem-Fakhoury
Finance Director

Anisa Sahoubah
Youth & Education Director

Nadia Tonova
National Outreach Director

Milestones 2009-2010

assisting. improving. empowering.

December

The **Center for Arab American Philanthropy (CAAP)** is recognized by the Charles Stewart Mott Foundation for the groundbreaking publication of *Insights on Arab-American Giving: A Report from the Collaborative of Arab-American Philanthropy*, and helping build Arab American philanthropy.

February

The new **ACCESS Youth & Family Services Center** opens its doors to serve the community. The Center is home to Youth & Education, Social Services, National Outreach and Administration.

March

National Network for Arab American Communities (NNAAC) holds its second annual Arab American Advocacy Week in Washington, D.C. where 12 Arab American community nonprofit organizations meet with policy-makers and elected officials to advocate for issues affecting Arab Americans such as: racial profiling, immigration reform and national service programs.

May

Noble prize winner Ahmed Zewail and Lynx Investment Advisory President and CEO Peter Tanous receive the **Arab American of the Year Award**. This prestigious honor is presented annually to individuals or organizations for their commitment and contribution to the development of their community on a local and national level.

The **Arab American National Museum** celebrates five years of successful operations! The AANM is still the only one of its kind among America's 17,500 cultural institutions.

The **6th National Arab American Service Day** sets a record turnout of more than 1,500 volunteers across 18 cities nationwide, including over 500 locally.

ACCESS' Community Health & Research Center opens a new facility in Macomb County. It is the first ACCESS location outside of Wayne County, and provides medical services, public health education, health screenings and mental health programs focusing on the new influx of refugees in the Macomb area.

June

ACCESS is honored with the **New Detroit Closing the Gap Award** for providing almost four decades of health and human services to a diverse population regardless of ethnicity.

The **7th Arab American National Museum Gala** features Enana Dance Theater, drawing a diverse crowd of more than 1,600 people, making it the most successful Gala AANM has ever held.

July

More than 200 volunteers show up with shovels in hand to **build a playground with KaBOOM! and the Knight Foundation** at the ACCESS Youth & Family Services Center. More than 3,200 youth under the age of 24 live within a one-mile radius of the Center, making the new playground an easily accessible and safe learning space.

The Detroit Institute of Arts joins the AANM, ACCESS, New Detroit and the Detroit Symphony Orchestra as a partner of the **18th Concert of Colors**. The weekend-long festival is designed to celebrate the many ethnic and cultural groups that comprise metro Detroit and continues to be one of Detroit's favorite free summer concerts.

ACCESS and Comcast celebrate the first graduating class of Comcast Digital Connectors. Through the program, students came to ACCESS to learn digital literacy skills in both after-school and summer training programs.

August

The Arab American National Museum used the Internet and social media to raise the remaining funds needed to complete a **sculpture of legendary journalist and Arab American Helen Thomas** to be displayed at the Museum. The 45-day campaign at www.kickstarter.com hit its goal one week early with donations from 75 supporters across the country.

Center for Arab American Philanthropy completes its second round of grantmaking, awarding \$53,000 to 11 Arab American organizations.

September

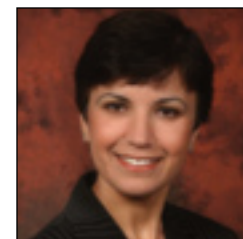
ACCESS collaborates with Henry Ford Community College to pilot a for-credit college preparation course. The course aims to help students successfully transition to and complete community college education.

ACCESS launches the new Family Skills Program. This initiative is a short-term, skill-building, home-based program that uses the Strengthening Families Curriculum. Participating families will gain parenting skills, children's life skills and family skills training involving parents and children, separately and together.

Treasurer's Report



Yasser Al-Soofi
Treasurer,
ACCESS Board



Maha Freij
Deputy Executive Director
and Chief Financial Officer

Schedule of Expenses (unaudited)

For the year ended:	Sept. 30, 2010	Sept. 30, 2009
Compensation	10,535,258	10,325,665
Contractual Services	2,089,893	2,337,707
Occupancy	808,278	582,200
Office and Program Supplies	672,924	491,127
Telephone & Postage	287,912	297,311
Repairs and Maintenance	364,560	326,971
Concert of Colors Series	114,459	120,438
Health Conference	23,471	149,955
Specific Assistance	368,628	424,650
Grants	178,090	202,942
Utilities	394,515	413,431
Printing and Publishing	125,608	176,404
Community Programs	50,825	51,214
Equipment Rental	68,887	62,746
Travel	135,453	132,783
Conferences & Meetings	233,379	282,848
After School Meals for Students	254,530	123,071
Insurance	119,720	121,664
Depreciation	692,678	645,717
Property Taxes	44,235	53,844
Interest Expense	50,927	22,648
Advertising	32,656	18,178
Automobile	13,206	18,987
Bank Charges	22,145	24,789
Dues & Memberships	15,259	20,530
Other Expenditures	41,083	28,190
Reimbursed Expenses	(187,738)	(134,253)
TOTAL EXPENDITURES	17,550,841	17,321,757

Arab American National Museum (AANM) Endowment Fund

The AANM Endowment Fund consists of four funds, one is invested with the Comerica Charitable Services Group and three funds are maintained by the Community Foundation for Southeast Michigan (CFSEM). The market value as of September 30, 2010 of the fund reported as an asset on the ACCESS balance sheet consists of the following:

AANM Endowment Fund (at CFSEM)	\$446,021
AANM Endowment Fund for Public Programming (at CFSEM)	\$501,025
Drs. Barbara & Adnan Aswad Endowment Fund (at CFSEM)	\$10,788
AANM Endowment Fund (at Comerica Charitable Services Group)	\$410,773
Total Value	\$1,368,607

The Community Foundation for Southeast Michigan has also accepted gifts from unrelated donors for the benefit of ACCESS. These assets are not reported on the balance sheet since the Community Foundation for Southeast Michigan maintains variance power with respect to the assets contributed to them for our benefit. Total value of these assets as of September, 30 2010:

AANM Endowment Fund	\$1,775,301
AANM Endowment Fund for Public Programming	\$414,888
Drs. Barbara & Adnan Aswad Endowment Fund	\$8,665
Total Value	\$2,198,854

Statement of Financial Position as of September 30, 2010 (unaudited)

ASSETS

CURRENT ASSETS

Cash - Unrestricted	\$ 3,375,115
- Temp. Restricted	1,048,945
- Board Restricted	258,756
Grants & Accounts Receivable	1,741,227
Prepaid Expenses	250,293
Inventory-AANM Gift Shop & Library	74,025
Total Current Assets	\$ 6,748,361

AANM Endowment Fund	1,368,607
Land and Buildings	27,116,674
Office Furniture and Equipment	1,625,730
Less Allowance for Depreciation	(4,788,413)
	\$ 25,322,598

TOTAL ASSETS **\$ 32,070,959**

LIABILITIES AND NET ASSETS

CURRENT LIABILITIES

Accounts Payable	\$158,381	
Deferred Income	90,701	
Notes Payable - Short Term	254,400	
TOTAL CURRENT LIABILITIES		503,482

NOTES PAYABLE - LONG TERM	1,685,145
TOTAL LIABILITIES	\$ 2,188,627

NET ASSETS

- Unrestricted	27,206,024
- Temporarily Restricted	1,307,701
- Permanently Restricted	1,368,607

TOTAL NET ASSETS	\$ 29,882,332
-------------------------	----------------------

TOTAL LIABILITIES AND NET ASSETS **\$ 32,070,959**

Schedule of Revenue for the year ended September 30, 2010

	Public & Mental Health	Employment & Training	Social Services	Youth & Education	AANM	National Outreach	CAAP	General Account	TOTAL
GRANTS									
Government	5,413,684	2,878,204	906,167	1,777,998	338,426	1,237,886		1,627,707	14,180,072
Foundations & Corporations	437,624	17,500	51,000	9,000	676,334	547,545	71,225	46,725	1,856,953
United Way for Southeastern MI		26,814	106,248	80,379				250,441	463,882
CONTRIBUTIONS & MEMBERSHIPS	7,849	5,920	11,492	5,850	62,192	5,100	109,510	61,264	269,177
SPECIAL EVENTS (Net)					117,972			99,664	217,636
FEE FOR SERVICE	149,760	37,420	152,176	173,860	54,874	13,303			581,393
INTEREST INCOME					51			12,726	12,777
RENTAL & OTHER INCOME	368,253				88,757	1,100		785,674	1,243,785
ADMISSIONS					14,388				14,388
ENDOWMENT FUND DISTRIBUTION					51,055				51,055
TOTAL UNRESTRICTED REVENUE	6,377,170	2,965,858	1,227,083	2,047,087	1,404,050	1,804,934	180,735	2,884,202	18,891,118
TEMP. RESTRICTED REVENUE	201,950	20,000	50,000	50,170	426,225	123,750	169,850	7,000	1,048,945
PERM. RESTRICTED REVENUE								315,235	315,235
CHANGE OF VALUE-AANM ENDOWMENT								79,418	79,418
TOTAL REVENUE	6,579,120	2,985,858	1,277,083	2,097,257	1,830,275	1,928,684	350,585	3,285,854	20,334,716
Release from Restriction	140,500	-	-	86,250	473,052	335,240	62,500	-	1,097,542

Statistical Report



ACCESS reached new heights this fiscal year by offering more than 90 programs in Wayne, Oakland and Macomb counties. The number of total contacts for this year increased to 1,400,619—up 9% from last year. We continue to be a regional service provider for all those seeking assistance and continue our commitment to serving our clients with dignity and respect.

While our diverse client base includes the African American and Hispanic American populations, ACCESS remains the largest provider of services for the Arab American community. While the numbers are important, giving our clients the best level of service is central. Bringing pride, support, health and economic stability to people's lives is what we are all about.

Clients Demographical Information Fiscal Year 2009-2010

Number of Contacts in Core Services490,272

Definition of contact: One visit per client. Core services include Social Service, Health and Mental Health, Employment & Training

Number of Contacts in Youth & Education Services432,554

Definition of contact: One hour of educational services per student

Total Number of Contacts in Core and Youth & Education Services 922,826

Number of Contacts in the Arab American National Museum (AANM) 477,793

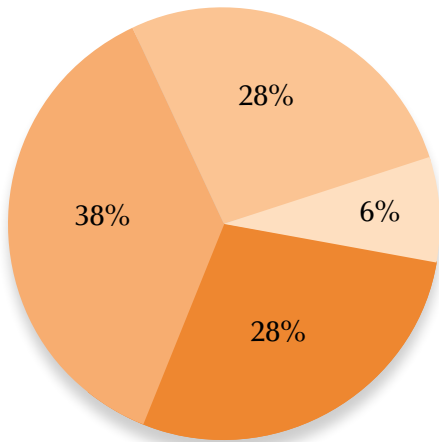
Definition of contact: One museum visit or attendance of one cultural and/or educational event

Total Number of Contacts.....1,400,619

an increase of 9% from last year

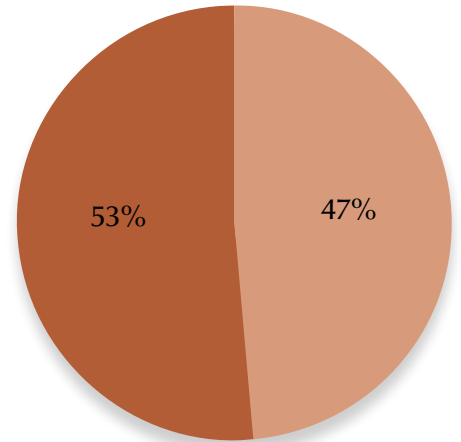
Client Demographics

Overview of Client Demographical Information for Fiscal Year 2009-2010



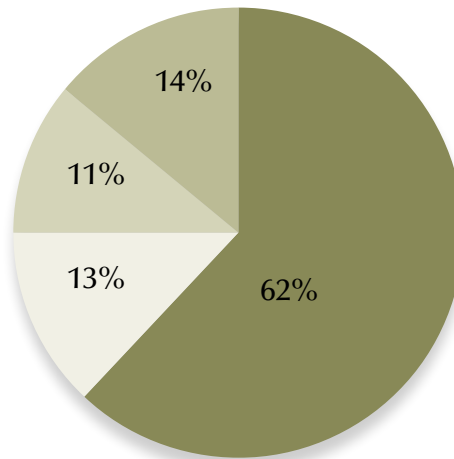
Clients by Age

■ 19 Yrs & Under: 28% ■ 40 Yrs to 59 Yrs: 28%
■ 20 Yrs to 39 Yrs: 38% ■ 60 Yrs & Over: 6%



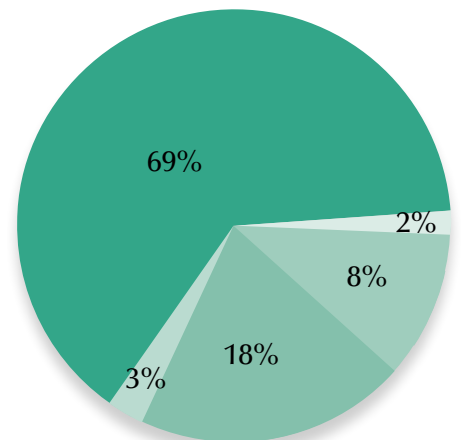
Clients by Gender

■ Female: 53% ■ Male: 47%



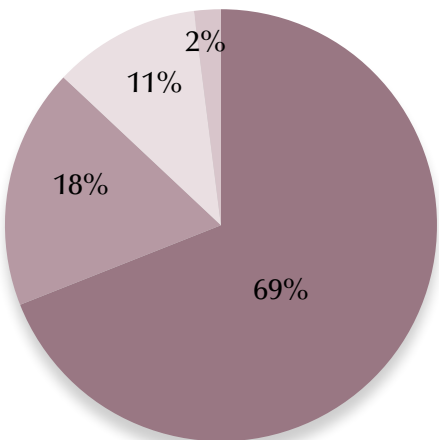
Clients by Employment Status

■ Unemployed: 62%
■ Not in Labor Force: 13%
■ Employed: 11%
■ Unknown: 14%



Clients by Race

■ Arab American: 69% ■ Hispanic American: 3%
■ African American: 18% ■ Asian American & Others: 2%
■ White: 8%



Clients by Household Income

■ Under \$20,000: 69% ■ Over \$50,000: 11%
■ \$20,000 - \$49,999: 18% ■ Unknown: 2%



Nurturing the youth of today into the trailblazers of tomorrow has always been the mission of our Youth & Education Department.

Youth & Education

ACCESS experienced yet another milestone year in 2010 when we proudly opened our doors to the new Youth & Family Services Center.

The Center exemplifies the ethos of our Youth & Education Department. It is a place where our kids come to play in our full-size gymnasium. It's where they receive quality education in our many classrooms. It is the new home for many programs and classes geared toward improving and enriching the lives of children and their families. These include Adult ESL, tutoring, character education, GED courses, music, fitness, Summer Academy and many others.

One of our most successful programs is the heralded 21st Century Community Learning Centers (21st CCLC). This unique after-school program supplements a student's primary education with hands-on tutoring, physical activity and character building. It's managed by our dedicated staff who work to help children thrive and strengthen their best abilities. We develop leadership while encouraging community engagement as well as civic responsibility.

For example, meet Samer Hachem, a Fordson High School senior who has devoted much of her free time to help kids through the Youth & Education Department. Samer joined the 21st CCLC as a student and tutored many children who were having trouble with their studies. She was a member of the University of Michigan Youth Dialogue Group that works to increase discussion about race and ethnicity among high schoolers. She also became an integral part of ACCESS ACTS, a high school group that volunteers time to mentor middle schoolers and prepare them for that big switch into high school.

Many of the 21st CCLC students embraced the opportunity to demonstrate their leadership skills by helping to design a new playground. Through our partnership with KaBOOM! and the Knight Foundation, volunteers of all ages from throughout the community built a colorful new playground right next to our new center.

Also, the Youth & Family Services Center offers a variety of educational and recreational services. Enjoy some of the selections listed and visit us soon.



Academic Enrichment

Programs in our 21st Century Community Learning Centers are offered at Lowrey Middle School, Salina Intermediate, Miller, William Ford, and River Oaks elementary schools; Fordson High School, Advanced Technology Academy, Bridge Academy and Frontier International Academy.

- ◆ After-school Homework Assistance
- ◆ Summer Academy - academic enrichment and all-day recreational programs
- ◆ Supplemental Educations Service (offered to select schools that qualify)
- ◆ Youth Dialogue Groups, in partnership with the University of Michigan

Family Literacy Program

- ◆ Adult Literacy (ESL - English as a Second Language) classes for men and women
- ◆ Focused Case Management
- ◆ Parenting Education
- ◆ Citizenship Classes (in preparation for U.S. Citizenship Test)
- ◆ Driving Test Prep Courses
- ◆ GED Classes



Other Services

- ◆ JIRAN (Join in to Revitalize Arab American Neighborhoods) Project
- ◆ Customized ESL training for employers (fee for service)
- ◆ Henry Ford Community College Preparation Courses
- ◆ Educational and Advocacy Opportunities
- ◆ Comcast Digital Connectors
- ◆ Head Start Programming through the YWCA at the Youth & Family Services Center
- ◆ Basketball League for youth and adults
- ◆ Taekwondo for youths
- ◆ Women's and Senior Fitness Classes
- ◆ Open Gym



Volunteers join KaBOOM! and the Knight Foundation to build a new playground.



Maria Washington's Dearborn home burned down, leaving her homeless with three young children. A single mother with nowhere to go, Maria turned to ACCESS and our Social Services Department.

Social Services

Through the help of our dedicated case managers and our partnership with Wayne Metropolitan Community Action Agency, Maria was quickly back on her feet. We were able to provide her with emergency services, food vouchers, and most importantly transitional housing. **But we didn't stop there.** ACCESS enlisted the help of our community and Maria received furniture and clothing from our generous donors and neighbors. **Her situation shifted from devastating to hopeful** and we are now working to help Maria find permanent housing.

Maria's story is one of many encountered daily at our Social Services Department. With two locations in Dearborn, plus a satellite office in Hamtramck, our Social Services Department provides invaluable resources to the community including



advocacy, information referral and translation. In addition, we give immigration assistance and emergency services such as help with food, utility shut-off prevention plus rent and mortgage assistance to prevent homelessness.

Michigan’s economy worsened with the world economy over the past several years and **for ACCESS it means the demand for our services increase.** Each day our case managers work one-on-one with clients like Maria, providing valuable service and peace of mind. **The main goal of Social Services is to provide our clients with the keys to self-sufficiency, giving them long-term stability rather than short-term assistance.**

Social Services provides many programs and services to meet these goals. **Our collaboration with Wayne County Department of Human Services (WCDHS) is unique to Michigan.** We host a complete Department of Human Services unit, including bilingual employees who are on site at our Schaefer location at all times. The combination of our dedicated case managers and the skilled DHS specialists provides clients with a wraparound, holistic approach to long-term stability. This means our clients will benefit from the expertise of DHS specialists and receive the services already provided by our Social Services Department all in one location.



We’re proud to offer Muslim senior citizens our **Halal Meals on Wheels program.** ACCESS and Senior Alliance Area Agency on Aging 1-C have worked together to provide halal food to Muslim senior citizens living in Michigan.

For immigrants, our specialists are accredited by the Board of Immigration Appeals. They are qualified to represent clients in immigration court and accompany clients to interviews with the Department of Homeland Security. **The specialists assist clients in five key areas: citizenship education, civic engagement, completion of forms, consultation and outreach.**

Social Service Programs

- ◆ **Information & Referral** – Provide assistance with completion of forms from the Michigan Department of Human Services (public entitlement benefits), Social Security Administration, Michigan Department of Labor and Economic Growth (unemployment offices), utility companies, health systems, etc.
- ◆ **Advocacy** (provide assistance with government and private entities)
- ◆ **Translation of Documents**
- ◆ **Interpretation**
- ◆ **Emergency Services Program** (rent/mortgage assistance, utility shut-off prevention and assistance, emergency food assistance)
- ◆ **Senior Services** – MiCafe Program (Food Stamp Assistance Program targeting seniors), long-term care planning, social activities, MMAP counselors
- ◆ **Immigration Services** – Accredited representatives provide consultations and outreach in the areas of family reunification, citizenship, National Visa Center Processing. We host Swearing-in Ceremonies in partnership with Department of Homeland Security.
- ◆ **Citizenship Classes**
- ◆ **Legal Services** – Private (fee-for-service) immigration law and family law, and free legal services to low-income clients as a result of our partnership with the Legal Aid and Defender Association.

Partnerships

- ◆ City Connect
- ◆ City of Dearborn
- ◆ City of Dearborn Heights
- ◆ Department of Human Services (DHS)
- ◆ Department of Labor & Economic Growth (DLEG)
- ◆ Detroit Area Agency on Aging (DAAA)
- ◆ Elder Law
- ◆ Legal Aid and Defender Association (LADA)
- ◆ The Senior Alliance
- ◆ Social Security Administration
- ◆ The Heat And Warmth Fund (THAW)
- ◆ United Way for Southeastern Michigan
- ◆ Wayne Metropolitan Community Action Agency
- ◆ University of Michigan

Community Health & Research Center

Abdullah Bataineh came to the U.S. with his wife nine years ago to pursue his doctorate in Public Administration. His first contact with ACCESS was through the Women, Infants and Children program (WIC) that provided food assistance for his family. However, WIC's biggest contribution to the Batainehs would come later during an extremely stressful situation.

Abdullah was blessed with a baby boy. However, his son was born with heart complications that forced the child to undergo surgery. Applying for health insurance became a difficult process for Abdullah due to the delicate nature of his son's condition. Handling insurance issues when a child is ill can be overwhelming. One problem Abdullah faced was that his policy continually changed.

So, WIC stepped in.

Our skilled staff members in the **Community Health & Research Center (CHRC)** spent time on the telephone dealing with insurance company officials and difficult policies. They helped guide Abdullah to locate the proper insurance needed for his son. **"What I appreciate about ACCESS is that they treat you like a human being regardless of your background,"** he said.

Abdullah's story is one of many others that can be found CHRC. **After 22 years and thousands of patients, the CHRC continues to provide the community with top-quality health care that's coupled with progressive research.** It consists of very respected health professionals who are all firmly dedicated to the cause of advancing and improving the health of the community at large.



The innovative programming initiatives, groundbreaking research and our strong commitment to preventing disease, reducing health disparities and promoting wellness in the community has garnered an enormous array of affiliations and partnerships. We work with state and federal government agencies, hospitals, universities, plus national and international organizations.

The ACCESS Community Health & Research Center spans six key divisions including Medical, Mental Health, Public Health, Environmental, Research and the Hope House. Each focuses on a different aspect of our community's health needs.



ACCESS Pharmacy

Medical Division

The ACCESS Health Clinic is the largest Arab American community-based one-stop medical facility in the United States. It provides a comprehensive range of services to the greater community and to Arab Americans in particular. Our staff is bilingual and culturally sensitive, enabling us to provide the best possible service.

Our modern medical center has maintained the designation of a Primary Care Level 4 facility in accordance with World Health Organization standards. All of the medical and mental health programs are designed to meet the U.S. Surgeon General's *Healthy People 2010* recommendations, that advocates healthy behaviors and disease prevention.

While the foundation of the CHRC is solid, its most impressive aspect is its ever-expanding nature. Like the Dearborn facility, our new Macomb facility (which is our first beyond Wayne County's borders) provides medical services, public health education, health screenings and mental health programs. We are focused on fulfilling the needs of the new and underserved refugees in the Macomb County area. Supplementary services including employment and ESL are already being offered by our partner, Lutheran Social Services.

The Community Health Clinic provides a range of primary and specialty care services as well as support services.

Community Health Clinic Services

- ◆ Internal Medicine with partial support from Michigan Department of Community Health (MDCH), Primary Care Division
- ◆ Family Medicine
- ◆ Obstetrics and Gynecology in partnership with Henry Ford Health System
- ◆ Pediatric Medicine
- ◆ Breast and Cervical Cancer Control Program (BCCCP) in partnership with Karmanos Cancer Institutes and the Michigan Department of Community Health (MDCH)
- ◆ Cardiology Clinic in collaboration with Oakwood Health System
- ◆ Breast Cancer Education and Screening Program in partnership with AVON Breast Care Funds and the Susan G. Komen Race for the Cure Foundation
- ◆ Refugee Medical Assessment Program in partnership with Michigan Department of Community Health
- ◆ Children and Adolescent Health Care Center Program
- ◆ Immunizations/School physicals
- ◆ Women, Infants and Children Program (WIC) in partnership with Wayne County Health Department
- ◆ Ancillary services include a complete lab in partnership with DMC Laboratories, and a pharmacy
- ◆ Senior Citizen Medical Screening Program in partnership with Senior Alliance

Community Health & Research Center *continued*

Mental Health Division

The ACCESS Mental Health Division offers a wide range of services for adults, children and families. Our bilingual, multi-cultural staff is competent in addressing specific issues within the Dearborn-area Arab American community and also provides a broad spectrum of services for the greater

community. Our **Psychosocial Rehabilitation Center for Survivors of Torture & War** remains the only center of its kind in Michigan and is part of a consortium of 26 centers for torture treatment in the United States.

Mental Health Services

- ◆ Adult and Children Mental Health
- ◆ Family Counseling
- ◆ Child & Family Home-Based Mental Health
- ◆ Developmental Disabilities
- ◆ Domestic Violence Prevention and Counseling
- ◆ Victims of Crime Program
- ◆ Early-On Infant Mental Health Services
- ◆ School-Based Services
- ◆ Substance Abuse Prevention Counseling and Treatment Program
- ◆ Trauma Screening Center
- ◆ Psychiatry Services for Adults and Children
- ◆ Clubhouse for mentally ill individuals
- ◆ Psychosocial Rehabilitation Center for Survivors of Torture & War with support from the Office of Refugee Resettlement and the United Nations Voluntary Fund for Serving Victims of Torture
- ◆ ACCESS/Freedom House Partnership for Screening and Advocating for Refugees and Asylum Seekers
- ◆ Annual Symposium on Refugees and Survivors of Torture

Environment Division

The ACCESS Environmental Program promotes the right of every community member to live in a clean, safe, healthy environment. Our work combines community education, community-based research and advocacy for environmental health and environmental justice. Programs to achieve these goals include:

Environmental Programs

- ◆ Environmental Advocacy/Action
- ◆ Southwest Detroit/South Dearborn Environmental Collaborative
- ◆ Youth Achieving Leadership and Learning About the Environment (YALLA) (now open to interested adults)
- ◆ Building Capacity Through Diversity Project
- ◆ Campaign for State Action on Environmental Justice
- ◆ Healthy Kids Community Garden Initiative
- ◆ Healthy Homes Workshop Series



Public Health Division

With the help from a grant by the Michigan Department of Community Health, ACCESS implemented **the successful Mpower project in a new Ferndale facility** geared toward HIV prevention and education. Research is indicating that the program has gone a long way toward reducing high-risk behaviors.

The Mpower project is one of many services and programs offered through our **Public Health Division**. The Healthy Kids Project promotes healthy and safe lifestyles for our children, while our staff in the Tobacco Prevention and Cessation Program works diligently to educate people on the harmful effects of smoking. We also offer the following programs:

Public Health Services

- ◆ H1N1 Public Health Awareness and Vaccination Campaign
- ◆ Health Disparities Reduction in Minority Health Capacity Building Project
- ◆ HIV/AIDS & STD Prevention Program provides:
 - Free HIV Testing, Counseling and Referrals services
 - HIV and STD care & treatment
 - Skills Building workshops to young high-risk individuals ages 18-29
 - Individual Level Prevention Counseling in partnership with the Centers for Disease Control (CDC), Michigan Department of Community Health/HIV-AIDS Intervention Section (MDCH-HAPIS), U.S. Health and Human Services Department (HHS).
- ◆ Diabetes Risk Factors Education, Screening, and Treatment
- ◆ The Kin Keeper Cancer Prevention Intervention in cooperation with Michigan State University
- ◆ Breast Cancer Genetics Education and Screening among Arab American women in cooperation with Karmanos Cancer Institutes
- and Detroit Mercy University School of Nursing
- ◆ Domestic Violence Coalition and Prevention Program
- ◆ Tobacco Prevention and Cessation Program
- ◆ MI Child/Healthy Kids/MOMS/Plan First, Families Health Coverage Program
- ◆ Substance Abuse Prevention Program
- ◆ Public Health Policy and Management consultation services

Research Division

Central to our mission is the very important pursuit of research that's focused on the assessment and health needs of our community. Research is an integral part of program development in each of the Community Health & Research Center's divisions. We focus on areas of epidemiology and mental health. Our researchers are well-respected academics and physicians from many health-related areas.

The **Research Center** is proud to host **the 6th International Conference on Health Issues in Arab Communities**. The event will take place in Aleppo, Syria, May 1-7, 2011.

This event continues the tradition established by our first conference in 1998 to affirm our commitment to disease prevention, health disparity reduction and promote wellness in the community at large. It has been strategically

designed based on the World Health Organization- Eastern Mediterranean Region Office's (WHO-EMRO) 2010 agenda of promoting development, fostering health security, strengthening health systems, harnessing research, information and evidence and enhancing partnerships.

The Conference will provide scientific information about the prevalence of disease risk factors and lifestyle behaviors in the Arab population. It will focus on the areas of genetics and health emphasizing chronic disease, quality health care, social determinants of health and global warming's effect of climate change on public health. Specialized workshops will offer in-depth presentations, trainings and discussions of research along with educational and clinical interventions happening in the Arab communities worldwide.

International researchers and experts from several countries with large Arab populations will share their latest findings on global health issues. **These workshops will provide advanced tools and technical assistance in the areas of medical research advancement.**

Participating partners in this conference include health and academic stakeholders such as the U.S. Department of Health and Human Services; the Center for Disease Control; American Cancer Society; select presidents of various American and global universities; chief executive officers of select hospitals; health-focused, non-government organizations; and the World Health Organization's East Mediterranean office.

For more information about the Conference, please contact Dr. Adnan Hammad at ahammad@accesscommunity.org.

Community Health & Research Center *continued*

ACCESS Hope House

For several years, the ACCESS Hope House has provided a home for clients who battle mental illness. Our mission is to help them cope with the difficulties of this condition by offering opportunities for friendship, employment and self-reliance.

The Hope House Program aims to improve each member's ability to cope with mental illness. **We provide possibilities for friendship, employment and self reliance. Each new interaction for our clients can mean one step closer to independence; a possibility made more precious because the obstacles are so great and the opportunities so few.**

A sense of insecurity and isolation is a common side effect of mental illness. There's an attitude that, as mentally ill people, we are "different" and unable to interact socially. This is a place where clients socialize and are actually smiling. Cooking, singing, engaging in conversation...and gaining hope.

Unlike traditional therapeutic programs, Hope House is open 365 days a year and offers a range of social and recreational activities available throughout the entire day and evenings.

Staff and members talk to one another, and work side by side. Members field volleyball and basketball teams. We share holidays and celebrate together. We find strength and support one another to minimize feelings of loneliness, improve mood and self-esteem. We provide transportation and abide by the International Standards for Clubhouse Programs (ICCD).



Our program consists of three units. The following activities take place on a daily basis, however are not limited to what is stated depending on member interests and needs. The three units are as follows:

Education Unit

- ◆ Members publish a weekly newsletter
- ◆ Maintain a library
- ◆ Vocational training
- ◆ Resume writing
- ◆ Mock interviews
- ◆ Outreach
- ◆ Case management

Clerical Unit

- ◆ Receptionist
- ◆ Ordering and receiving supplies
- ◆ Complete intake packets
- ◆ Filing
- ◆ Daily and weekly timesheets
- ◆ Case management

Kitchen Unit

- ◆ Organizing weekly menus
- ◆ Maintain a snack shop
- ◆ Cook healthy meals
- ◆ Planning for field trips
- ◆ Case management





Life can become extremely difficult when you're unemployed. Bills need to be paid and the uncertainty of where that money will come from can be very daunting. If you've lost your job and need a new start, the ACCESS Employment & Training Center is designed to assist.

Employment & Training

We are one of a small handful of certified Michigan Works One-Stop Employment centers and we uphold the mission to support employers and workers. We match people with available jobs that suit their skills.

ACCESS' highly skilled and multi-lingual staff is prepared to strengthen your skills for quality employment. **Training and professional development programs are available to both employers and employees** to improve occupational skills plus increase employment, retention and earnings. Participants not only receive training in employability, but also life skills. They benefit from career counseling, job search assistance, job development/job placement, support services and referrals through our intensive case management services.

Mona Abbas was one such person who needed answers and somewhere to turn. Mona came to the U.S. several years ago from Lebanon with her husband and two young children. Shortly after their arrival, her husband abandoned her and she was faced with the difficult task of raising a family on her own. **With no money and no job she came to ACCESS' Employment & Training Center and we helped Mona gain skills for a strong career.** Through our JET Plus Program, she became a registered Medical Assistant. She is currently externing at the ACCESS Community



Through the Jet Plus Program, Mona Abbas is now pursuing a career in health care.

Employment & Training *continued*

Health & Research Center, plus she's studying to become a Clerical Medical Assistant! **Mona's future and the needs of her children are now secure, thanks to ACCESS.**

Here at ACCESS, we value our ability to serve the entire Detroit metropolitan area. Our Employment & Training Department programs and services include:

Employment Service Programs

- ◆ Workforce Investment Act – Adult, DLW, Youth and Special Populations Programs
- ◆ No Worker Left Behind Program
- ◆ Work First/JET & JET Plus programs (community- and campus-based)
- ◆ Specialized workshops to empower job seekers
- ◆ Self-directed resource room with internet access
- ◆ Learning Lab with assessments and self-paced tutorials (Basic Skills, GED, ESL, Office Skills) and Computer Application Training
- ◆ A range of services to employers seeking a qualified and diverse workforce (Recruitment, screening, consultations, mediation, job fairs, etc.)



ACCESS 2010 Spring
Job Fair



ACCESS Job Fair

For Employers

At ACCESS, our relationship with employers is as important as our connections with job-seekers. We strive to build strong relationships with employers across the region. We administer screening, testing and assessments to ensure employers meet well-qualified candidates sent from our department. Additional services include worksite support, on- or off-site employer/employee mediation, diversity training and consulting.

Three times each year, the ACCESS Dearborn One-Stop Service Center offers major job fairs that service 35-40 employers and attract hundreds of job seekers. We take pride in linking the right people with the right jobs, and believe our success is measured by the success of our clients.





This Network follows in the great American tradition of civic engagement in minority and immigrant communities.

National Network for Arab American Communities



Center for Arabic Culture

In 2004, ACCESS sparked an initiative that originally brought together 10 Arab American community groups for the national AmeriCorps program and other training activities aimed at strengthening organizations.

This grassroots movement engaged partners to create a Network that now explores further collaboration in building a lasting institution to enhance our local mission on a national level. This is how the National Network for Arab American Communities (NNAAC) was born. Now with 21 independent grassroots organizations, the Network spans from coast to coast in 10 states and the D.C. area.



9th Annual NNAAC Conference in Newark, New Jersey

Dina Etmam 2010

This Network follows in the great American tradition of civic engagement in minority and immigrant communities.

NNAAC works toward civil rights, economic empowerment and broad representation in all aspects of American society. Support to members comes in a variety of ways including the National Arab American Resource Corps, Advocacy & Civic Engagement programs and Organizations Development. These programs are designed to work in an integrated manner to accomplish its goals.

For example, The National Arab American Resource Corps (ARC) is a national AmeriCorps Program with 75 members working to empower communities. It provides members the opportunity to serve in NNAAC member organizations nationwide. The harmony between the three entities helps to promote civic engagement and improve lives. **AmeriCorps members provide critically needed direct human and employment services;** they organize educational workshops and training, recruit thousands of volunteers and work to involve youth through a spectrum of programs.

The Advocacy & Civic Engagement Program plays a pivotal role in empowering the Arab American community at the local and national levels through policy development, issue advocacy and community organizing. The program leads NNAAC's engagement with the immigrant and civil rights movements while representing NNAAC in several major national coalitions, such as the Rights Working Group and Reform Immigration for America. The program also organizes an annual Arab American Advocacy Week in Washington, D.C. in

collaboration with the Arab American Institute. The program aids NNAAC members in strengthening their ability to serve as a voice for their communities with their advocacy work.

The Organizational Development Program builds the capacity of NNAAC members, reinforcing their ability to provide services, develop and run programs and effectively manage their organizations. This is accomplished by grants to members, technical assistance and support services, organizing on-site trainings and facilitating shared learning across the Network.

In 2009, NNAAC supported the member organization the Center for Arabic Culture (CAC) in Cambridge, Massachusetts through various forms of capacity building. **Through grants and scholarships, CAC was able to better position itself by attending trainings on advocacy writing, grant writing and earned income strategies.** Now a financially stable organization, CAC is planning on moving into its own space where it will be able to earn rental income as well as provide wider programming.

Another form of support provided to the Network is through the Annual NNAAC Conference. For the last nine years, the conference has offered a large number of workshops, training sessions and panels on issues of concern to NNAAC members. The conference is an outstanding networking event for NNAAC members, immigrant rights and civil rights advocates, nonprofit leaders, educators, private foundations and other funders interested in connecting with and learning more about the Arab American community.

2009-2010 Highlights

Arab American Resource Corps (ARC)

ARC AmeriCorps members played a critical role by serving over 20,000 people throughout the country in a variety of areas, and working to address vital human needs during the economic downturn.

ARC members organized the 6th National Arab American Service Day setting a record turnout of more than 1,500 volunteers across 18 cities nationwide, including over 500 locally.

As part of President Barack Obama's call for service on September 11, ARC members gathered across the country to give back. In Dearborn, Michigan, more than 600 volunteers joined local ARC members and parenters as

part of the Acts of Kindness (A-OK) Detroit: A Weekend of Remembrance and Restoration.

Advocacy & Civic Engagement (ACE)

In April 2010, leaders from 12 Arab American community nonprofits convened in Washington, D.C., for the 2010 Arab American Advocacy Week. NNAAC members attended a White House briefing, meetings with senior administrative officials and a luncheon on Capitol Hill.

NNAAC members played a pivotal role in increasing Arab American participation in the 2010 Census through public education and assistance.

ACE program played a leading role in immigrant and civil rights coalitions

at the local and national levels. The program led NNAAC's participation in the Reform Immigration for America Campaign.

Organizational Development Program

The 9th Annual NNAAC Conference took place in Newark, NJ, where NNAAC members and the local community came together around the theme *Learn, Adapt, Succeed*.

The conference addressed critical issues facing nonprofits through workshops, trainings, keynote speakers and peer-to-peer learning.

The program provided mini-grants and scholarships to NNAAC members to build their capacity and provide training opportunities.

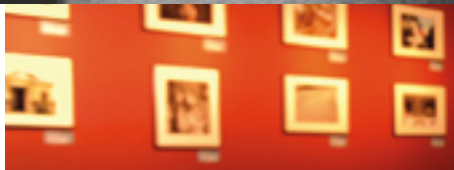


Arab American National Museum

The AANM remains the only cultural institution of its type in the world, dedicated to documenting and celebrating Arab American history, culture and contributions to American society.

In the midst of a bustling schedule of exhibitions, concerts, films, tours, educational workshops and outreach activities, the Arab American National Museum (AANM) reached a major milestone in May 2010 when it marked the completion of five years of successful operations. **It remains the only cultural institution of its type in the world, dedicated to documenting and celebrating Arab American history, culture and contributions to American society.**

That anniversary wasn't the only achievement of note at the AANM during the last year. The AANM's outreach capabilities took a quantum leap with the launch of its **globally accessible page on iTunes U, the free-content portion of Apple's massively trafficked online iTunes Store.** More than 28,600 downloads of Museum



SURA Arts Academy student photographer Mawj Mohammed at the 2010 SURA exhibition at the AANM

content – oral histories, audio tours and video segments of AANM events such as DIWAN: A Forum for the Arts – have been logged thus far. That’s in addition to the 51,000 visitors the Museum welcomes each year, and the 425,000 people who take part in off-site AANM events.

The 10th anniversary of SURA Arts Academy is yet another significant accomplishment. Created by the Museum’s forerunner – the Cultural Arts Department of AANM parent organization ACCESS – SURA Arts Academy has flourished in its new home. Hundreds of young people have been touched by this diversity-themed, community-based photography instruction program, which in 2008 won the prestigious Coming Up Taller Award for the nation’s best after-school programs from the President’s Committee on the Arts and the Humanities.

“I remember walking in (Detroit’s) Mexican Town on a hot day during a field trip with our SURA group,” says SURA alumna Mawj Mohammed, “when we saw a party store that had air conditioning. We went inside and our instructor was asking the cashier how business was going. It turned out the cashier was the business owner. She had worked hard to put her two sons through college and was now having a hard time with her store because of the economy. I was really surprised. I never expected this woman behind the counter was so successful, owning her own business and putting her kids through school. ‘Never judge a book by its cover’ was the lesson I learned that day.”

The work of opening minds and altering attitudes takes place both inside the Museum as well as at off-site AANM programs and events. Museum exhibitions over the last year explored the shared experiences of diverse immigrant groups (*Connecting Communities*); shed light on a little-known region of the Arab World (*Noble Jewels: North African Jewelry and Photography from the Xavier Guerrand-Hermes Collection*); and celebrated the Arab World tradition that fueled the Industrial Revolution (*From Mocha to Latte: Coffee, the Arab World and the \$4 Cup*).

Local audiences enjoyed two rare cultural presentations in the last year, when the AANM brought MESTO Multi-Ethnic Star Orchestra and Syria’s Enana Dance Theater to Detroit’s historic Orchestra Hall. The AANM-led Concert of Colors marked its 18th year by adding a major new partner and venue, the Detroit Institute of Arts, to



2010 Concert of Colors (Photo by Rebecca Cook)

Arab American National Museum *continued*

the coalition that produces this beloved diversity-themed annual free music festival. AANM stalwarts including the Global Thursdays world music concerts and the rarely presented titles of the Arab Film Festival continued to constitute core programming.

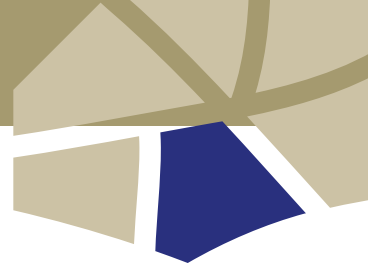
Standing-room-only audiences assembled for special events including a panel discussion on Middle East news coverage with BBC journalists and a reading by author Alia Malek (*A Country Called Amreeka: Arab Roots, American Stories*) that was taped for national broadcast by C-SPAN2's *Book TV* program.

Outside Michigan, the AANM is connecting with Arab Americans across the country on a variety of fronts. The Museum took its act on the road, staging its first-ever Washington, D.C. fundraiser last fall and a "meet the AANM" reception in Los Angeles this spring. Planning is already well underway to present the Museum's *DIWAN: A Forum for the Arts* in New York City in 2011. A national online fundraiser to complete a sculpture of legendary journalist and Arab American Helen Thomas exceeded its \$10,000 goal well before the deadline, earning supporters from across the U.S.

On a larger scale, the AANM joined with cultural institutions in the U.S. and Europe in the Immigration Sites of Conscience Network, which is dedicated to fostering constructive discussion of immigration issues among museum audiences.

Enana Dance Theater





The Center for Arab American Philanthropy strengthens Arab American giving by establishing charitable legacies through education, grantmaking, and endowment building.

Center for Arab American Philanthropy

When the Center for Arab American Philanthropy (CAAP) first launched in 2005, the vision was to create a permanent institution to support and strengthen philanthropy in the Arab American community. Over the last five years, with our increased expertise, **CAAP has evolved from a program educating and training organizations and individuals on the value of philanthropy, to the only national philanthropic institution in the Arab American community following a community foundation model, managing individual philanthropy and making grants to strengthen Arab American organizations.**

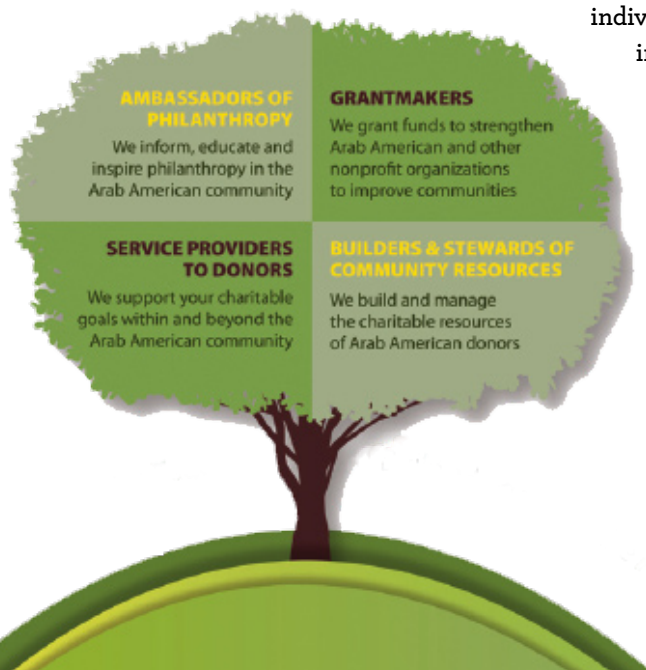
In 2009, CAAP awarded \$73,900 in its first round of grantmaking to 16 Arab American organizations. Also in 2009, CAAP granted another \$101,900 to Arab American organizations through 30 Donor-Advised Funds. In 2010, CAAP completed its second round of grantmaking, awarding \$53,000 to 11 Arab American organizations. Additionally, \$85,000 was granted to nonprofit organizations both within and outside of the Arab American community through individuals' Donor-Advised Funds.

Through its general grantmaking and Donor-Advised Funds, **CAAP increases organizations' capacities to provide much-needed services in their communities, and empowers individuals to fulfill their philanthropic goals within and beyond the Arab American community.** By giving through CAAP, donors are empowering the community today and leaving a legacy of Arab American philanthropy for the future.

For more information about CAAP, please visit www.centeraap.org.

"Flint is one of the hardest hit and financially depressed cities in the United States and these conditions affect Arab Americans just as they do the larger community. There is an urgent need to identify new, emerging, and shifting needs in our community. This study is now possible through the grant received from CAAP and for that we are very thankful."

Mona Sahouri, Executive Director, Arab American Heritage Council



Our deepest gratitude to our 2009-2010 DONORS

(Oct. 1, 2009 - Sept. 30, 2010)

\$1,000,000+

City of Detroit
Corporation for National Service
Detroit Wayne County Community
Mental Health Agency
Michigan Department of
Education
Michigan Department of Human
Services
Southeast Michigan Community
Alliance
Wayne County Parks

\$500,000 - \$999,999

Michigan Department of
Community Health
United Way for Southeastern
Michigan

\$100,000 - \$499,999

Carnegie Corporation of New
York
Centers for Disease Control and
Prevention
Ford Foundation
Four Freedoms Fund
Kresge Foundation
McGregor Fund
Michigan Primary Care
Association
Michigan State University
Nathan Cummings Foundation
Occidental Petroleum
Corporation
Office of Refugee Resettlement
Open Society Institute
Saudi Aramco
Susan G. Komen For The Cure
U.S. Department of Agriculture
U.S. Department of Commerce
U.S. Department of Housing and
Urban Development
Wayne County Health
Department

\$50,000 - \$99,999

Avon Foundation Breast Care
Fund
Blue Cross Blue Shield of
Michigan
C. S. Mott Foundation
City of Dearborn

Comerica Charitable Foundation
Erb Family Foundation
Institute of Museum and
Library Services
Meijer
Proteus Fund
Ruth Mott Foundation
Mr. and Mrs. Ghassan Saab
Skillman Foundation
United Nations
W.K. Kellogg Foundation
Wayne - RESA

\$25,000 - \$49,999

Mr. and Mrs. Richard A. Abdo
ANERA
Bank of America
Detroit Symphony Orchestra
DTE Energy
ExxonMobil Corporation
Ghafari Associates, L.L.C.
Mr. and Mrs. Basem and
Muna Hishmeh
Masco Corporation Foundation
Michigan Coalition Against
Domestic and
Sexual Violence
Non Profit Finance Fund
Target Corporation
The Tides Center

\$10,000 - \$24,999

Mr. and Mrs. Nicola M. Antakli
AT&T
Charter One Bank
Embassy of the State of Kuwait
Embassy of the State of Qatar
Fifth Third Bank
Ford Motor Company
JPMorgan Chase
Leadership Conference on
Civil Rights
Michigan Conference of
Seventh-day Adventists
Michigan Nonprofit Association
Royal Embassy of Saudi Arabia
Safe Routes to School
The Senior Alliance
Mr. Hussien Y. Shousher and
Dr. Randa Mansour-Shousher
Mr. and Mrs. Peter J. Tanous
TPS Logistics
U.S. Department of State
Wayne Metro - HUD Program

\$5,000 - \$9,999

A.S.A.C.A.
American Association of
University Women
Comcast
Dr. Walid and Mrs. Rasha
Demashkieh
Mr. and Ms. Keith Edwards
Families USA Foundation
Ms. Joann Fawaz
Health Alliance Plan
Henry Ford Health System
Hudson-Webber Foundation
Nissrine Hussein and
Ghassan Daher
Dr. Fikry F. Ibrahim and
Dr. Mona Rizk Ibrahim
Jamison Williams Foundation
Mr. and Mrs. Osman R. Minkara
National Arab American
Medical Association
National Endowment for the Arts
Oakwood Healthcare, Inc.
One Economy Corporation
Atty. and Mrs. George Salem
U.S. Census Bureau
U.S. Department of Justice
Visiting Nurses
Wayne State University

\$2,500 - \$4,999

Dr. Nabil Azzam
Dr. and Mrs. Yahya M. Basha
Dr. Amer Bisat
Chaldean American Chamber
of Commerce
Mr. and Mrs. Ahmad Chebbani
City of Dearborn Heights
Detroit Medical Center
Embassy of Libya
Etihad Airways
Mrs. Mary Sue Ewing
Mr. Nijad Fares
Mrs. Bahiya Fawaz
Mr. Roy and Mrs. Maha Freij
Global Educational Excellence
Harper University Hospital
Dr. Farid and Mrs. Maha Jano
Dr. and Mrs. Omar Kader
Ms. Esther Michael
Michigan Kidney Consultants, PC
Minnesota Council of Nonprofits
Mr. Jacques Nasser

Physician Healthcare
Network, P.C.
Port Huron Hospital
Prevention Network
Dr. Bashar Samman and Dr.
Randa Jundi-Samman
Mrs. Betty H. Sams
Mr. and Mrs. Kamal Shouhayib
Dr. Bashar and Mrs. Hoda Succar
University of Michigan - Dearborn
Verizon Wireless
Wal-Mart (Market 159)
Wayne State University School of
Medicine

\$1,000 - \$2,499

AAA Michigan
Dr. and Mrs. Thabit Abbarah
About Face, Inc.
Dr. and Mrs. Mostafa I. Abuzeid
Advanced Medical Center PLLC
Mr. Nadim S. and
Mrs. Rima Ajlouny
Dr. Roger and
Mrs. Rosette Ajluni
AK Steel
Mr. Malek Akkad
Dr. Sami and Mrs. May Akkary
Mr. Devon M. and
Mrs. Dharma R. Akmon
Mr. and Mrs. David J. Allen
Dr. and Mrs. Ali A. Alley
Dr. and Mrs. Kamal M. Itani
Mr. Noel J. Saleh and
Dr. Anan Ameri
American Cancer Society Great
Lakes Division, Inc.
American Ramallah Federation
Americare Medical, Inc.
Mr. and Mrs. Michael Ansara
Arab American Heritage Council
Arab American Institute
Foundation
Arabian Village Market
Dr. Mariam Awada
Barbara Ann Karmanos Cancer
Institute
Nasser Barghouti, Ph.D.
Dr. Eitedal Baysouni
Beatrice & Reymont Paul
Foundation
Mr. and Mrs. Hussein Berry
Beverly Hills Academy
Ms. Diane Binson
Mrs. Ilene S. Blackman

Our deepest gratitude to our 2009-2010 DONORS

(Oct. 1, 2009 – Sept. 30, 2010)

- Dr. Dennis I. and Mrs. Andria R. Bojrab
Ms. Elizabeth Brazilian
Ms. Nancy Brownrigg
Byblos Banquets
Mr. Kameel Chamelly
CMS Energy
Dr. Ghaleb H. Daouk
Mr. Warren and Dr. Amal K. David
Mr. and Mrs. Ethan D. Davidson
Dearborn Public Schools
Dearborn Village Community Credit Union
Mrs. Hannan M. Deep
Detroit Contracting, Inc.
Detroit Zoological Society
Mr. Joseph J. Diederich
Drs. Samer and Lina Dirani
Drug Max
Dr. Basim Dubaybo
Mr. and Mrs. Nazeeh Elias
Emirates Airlines
Encore Impressions
Mrs. Inea Bushnaq Engler
Mrs. Randa Fahmy-Hudome
Fairlane Ford
Mr. Mike and Mrs. Wisam Fakhoury
Fakih & Associates, PLLC
Mr. Haytham Faraj, Esq.
Federal-Mogul Corp.
Mr. and Mrs. Bishara J. Freij
Hamadeh Educational Services, Inc.
Mr. Peter Hamady
Mr. and Mrs. Alan and Lina Harajli
Ms. Sonia M. Harb and Mr. Taha Dahabra
Heart & Vascular Institute
Henry Ford Health System
HFHS - Women's Health Services
Mr. James A. Hiller
Dr. Faleh and Mrs. Alya Hussein
International Union, UAW
Islamic Center of America
Mr. and Mrs. Hassan Jaber
Mr. Nazih Jawad
Mr. Assad Jebara
Joe & Ed Schaefer Market
Mr. and Mrs. Khalil Karjowally
Dr. Nadim Y. Kassem
Dr. Abdalmajid Katranji and Ms. Hala Taifour
Katranji Hand Center
- Mr. Ghaffar Kazkaz
Dr. Mazen Khalidi
Dr. and Mrs. Hanna M. Khouri
Dr. and Mrs. Riad Khoury
Kiwanis Foundation of Dearborn, Inc.
Mr. Mauricio Kohn
Ingmar Korstanje
Lebanese American University
Dr. Francis R. Shor and Ms. Barbara Logan
Dr. Rula Mahayni
Hon. Mona K. Majzoub
Ms. Sue Makki
Dr. Clovis Maksoud
Mr. and Mrs. Tahir M. Mansour
Mr. Yasser Mansour
Marathon Oil Company
Mr. Khader Masri
Mr. and Mrs. Ron May
Mr. and Mrs. David H. Mendelson, M.D.
Mercedes Benz of Bloomfield Hills
Michigan Institute of Aviation & Technology
Michigan State Housing Development Authority
Michigan Voices
Midwest Health Plan
Molina Healthcare of Michigan
Mr. Karim Mostafa
Mr. Salim Harb and Ms. Mariam Mroue
Muchmore, Harrington, Smalley & Associates
Mr. Basel Nafal
NBS Commercial Interiors
National Council of La Raza
New Detroit, Inc.
Mr. Ramzi Nuwayhid
Optik Birmingham
Mr. and Mrs. John P. Oswald
Mr. and Mrs. Ismail Radwan
Mr. and Mrs. Robert G. Riney
Ms. Jacqueline Rizik
Robert A. Ficano Committee
Ms. Cassandra Z. Rodger, Ttee.
Mr. and Mrs. Shamel Rushwin
Rutgers Presbyterian Church
Denyese Sabagh, Esq.
Dr. Faysal and Mrs. Rajaa Saksouk
Dr. Isam N. and Mrs. Wafa Salah
Mr. Isam Salah and Ms. Betsy Haddad
- Ms. Suzan Samaan
Mrs. Helen Samhan
Dr. Hadi and Mrs. Nashwa Sawaf
Scheff, Washington & Driver, PC
Mr. Andy Shallal
Mr. and Mrs. Riad Shatila
Dr. Muaiad and Mrs. Aida Shihadeh
Shore Mortgage
Siena Heights University
Mr. Richard Soble
Social Security Disability Law Center, PC
St. Mary's Antiochian Orthodox Church
State Farm Insurance Companies
State Voices
Mr. William W. Swor, Esq.
Dr. and Mrs. Moanes Takriti
The Henry J. Kaiser Family Foundation
Uncle Al's
University Musical Society
Ms. Karen Williams
Mr. Rajae and Mrs. Edna Zaid
Dr. Pierre A. and Mrs. Nawal Zayat
Mr. Fadi Zuhayri
- \$500 - \$999**
- Ms. Salwa Abdolkarim
Ms. Wadad K. Abed
Hon. and Mrs. Spencer Abraham
Dr. Melody M. Abraham
Mrs. Hala Ajluni
Dr. and Mrs. Abd Alghanem
Al-Haramain Royal Kabob
Dr. Samir and Mrs. Alya Alsawah
American Druze Society
American Moslem Society
Antiochian Orthodox Christian Archdiocese
Mr. Chaker Aoun
Arts Midwest
Dr. and Mrs. Basim I. Asmar
Associated Food & Petroleum Dealers
Drs. Adnan and Barbara Aswad
Mrs. Salwa Atassi
Mr. and Mrs. Edward Bagale
Mr. Mohamad H. Bandar
Bank of Michigan
Dr. Rashid L. Bashshur
Dr. Fouad and Mrs. Lina Batah
Mr. Barry Berk
- Black Lotus Brewing Co LLC
Mr. Sean D. Blackman
The Hon. David E. Bonior
Bridge Academy
Cafe Cortina
Mr. Terry L. Campbell
Capital Regional Community Fund
Mr. and Mrs. Ramzi Chraim
Mr. Greg Clark
Council of Islamic Organizations of Michigan
County of Wayne - Office of the Prosecuting Attorney
Mr. and Mrs. Robert Courey
Mr. and Mrs. Ralph Cushing
CVS Caremark
Delta Dental
Mr. Dennis Denno
Dr. Khalil and Mrs. Anne Dirani
East Dearborn Downtown Development Authority
Ms. Janet M. Elias
Ms. Jinan Elkhatib
Emile Salon
Eye Care Specialists, PC
Fairlane Town Center
Mr. Said Farah
Dr. John W. Farah
Mr. Fateh Fetouhi
Mr. and Mrs. John Fiegel
Forte Belanger
Freddie Mac Foundation
Ms. Janice Freij
Dr. Randy Freij
Frontier International Academy
Geer Park Elementary
Dr. Elias G. Gennaoui
Mr. and Mrs. Buolus Ghraib
Mr. and Mrs. Waleed K. Gosaynie
Mr. R. Frederick Green, Ttee.
Julia S. Greer M.D.
Ms. Elaine C. Hagopian
Dr. Ayman Haidar
Drs. Batul and Ismat Hamid
Hamtramck Public Schools
Hamzavi Dermatology-Canton
Dr. and Mrs. Shawki K. Harb
Mr. and Mrs. Raif Harik
T.J. Hassan, M.D., P.C.
Mr. Mosein Hussein and Ms. Nawal Haidarah
Hype Athletics Community, Inc.
Dr. Claire A. Issa
Dr. Fahd S. Jajeh
Mr. Nasser and Mrs. Samia Jallad

Our deepest gratitude to our 2009–2010 DONORS

(Oct. 1, 2009 – Sept. 30, 2010)

\$500 - \$999 continued

Jorgensen Ford
 Ms. Maha Kaddoura
 Mr. Nafa Khalaf
 Dr. and Mrs. Rashid Khalidi
 Ms. Racha Khansa
 Drs. Riad and Ghada Khatib
 Mr. Bob King
 Konica
 La Marsa
 Law Offices of Wachler & Associates, P.C.
 Dr. John I. Makhoul
 Mr. Ziad Ismail and Ms. Linda Mansour
 Mrs. Suzy Adra Mazloum
 Ms. Ruth K. Mechigian
 Media Center Gold LLC
 Merrill Lynch & Co. Foundation, Inc.
 Miller Elementary School
 Mizna Management LLC
 Mrs. Patricia E. Mooradian
 Morgan Stanley Smith Barney
 Moroccan American Center for Policy
 Dr. and Mrs. Sami Mounayer
 Ms. Grace Muller Tompkins
 Dr. and Mrs. Adnan Munkarah
 N.J. Diamond, INC
 Mr. and Mrs. Patrick Naganashe
 Mr. and Mrs. George Nahhas
 Dr. Abdallah E. Najjar
 Mr. Hassan Newash
 Dr. Anis Obeid
 Mr. Michael and Ms. Deborah Deacon Odette
 Dr. Zaven and Mrs. Lena Oskanian
 Ms. Susan Petros
 Mr. and Mrs. Muhammad Qasem
 Ramallah Club of Metropolitan Detroit
 Dr. and Mrs. Ghassan Rifai
 Ms. Rania Rifai
 Roma Bakery
 Mr. Robert Rowling
 Mr. and Mrs. Khalil Saab
 Mr. and Mrs. George Saba
 Dr. and Mrs. Safwan Saker
 Ms. Samar Salman
 Ms. Rania Sambar
 Mr. Ralph Schofield
 Mr. Samer Shihadeh
 Mr. Gerald W. Smith
 Ms. Linda M. Smith
 St. Joseph Mercy Oakland

Mr. and Mrs. Stanley M. Stewart
 Dr. G. Marie Swanson
 Mr. and Mrs. Ahmad Talab
 Ms. Nada Tawakkol
 Mr. and Mrs. Lami Taweel
 The Henry Ford
 TMA Travel & Tours
 Mr. Stephen Williams
 Yemeni American Association

\$250 - \$499

Mr. Amr Abbas
 Dr. Rashid Abdu
 Mr. and Mrs. Sami Abed
 Dr. Victor and
 Dr. Mary France Abirogi
 Ms. Jamile Adora
 Ms. M. Renee Ahee
 Dr. and Mrs. Ernest F. Ajluni
 Mr. Yasser Al Soofi
 Mr. and Mrs. Bahjat Al-Aboosi
 Drs. Imad A. and Raida Alazem
 Mr. and Mrs. Ahmad Aljerdi
 Mr. Ali Baleed Almaklani
 Mr. Mohammad Alnouri
 Mr. Rashed Amine
 Dr. and Mrs. John Artis
 Mr. Sami Asmar
 Mr. Marvin Asuncion
 Mrs. Andrea Awada-Zeaiter
 Mr. Alaa Baalbaki
 Ms. Mais Badwan
 Ms. Mariam Bakri
 Mr. Rashid Barkaji
 Ms. Elizabeth D. Barrett
 Ms. Ghazaleh Baydoun
 Ms. Ashley Berry
 Mr. Derrel Dronich and
 Ms. Maya Berry
 Mr. Abdallah Boumediene
 Ms. Lynn M. Brimer
 Ms. Corlette Brown
 Mr. and Mrs. Donald S. Bustany
 Mr. Paul and Mrs. Sandra Butler
 Century 21 - Curran & Christie
 Ms. Mary Kate Chaath
 Mr. Randal Charlton
 Mr. David Christensen
 Mrs. Mollie Cirlos
 Mrs. Badia Cobey
 Dr. Hassan Dakroub
 Dan Yessian Music, Inc.
 DBA Sheba Discount
 Pharmacy Inc.
 Distinctive Designs & Drapery

Dr. Nuzmeya Elder
 Eleganza Boutique
 Mr. Medhat Elfawal
 Mr. Darik Elwan
 Mr. and Mrs. Kenneth M. Essad, Esq.
 European Tanning Club, Inc.
 Ms. Insaf Fadlallah
 Mr. and Mrs. Troy Farah
 Ms. Sikney Faraj
 Dr. Abdelkader H. Fares
 Mr. and Mrs. Samir Z. Farhat
 Mrs. Pamela Faris
 Ms. Mona Farroukh
 Brigitte Fawaz-Anouti and Haj Wissam Anouti
 Flowers By Renee
 Ms. Michele Forzley, J.D., MPH
 Ms. Susan L. Franklin
 Ms. Aglaia Grinstead
 Ms. Chrisina E. Guzman
 Ms. Suzan S. Habachy
 Ms. Judette Haddad
 Mr. and Mrs. Robert Hadous
 Dr. and Mrs. Mahmoud A. Hai
 Ms. Farrah Haidar
 Dr. and Mrs. Louis Hallal
 Mr. and Mrs. Theodore Hamady
 Dr. and Mrs. Suleiman Hamdan
 Mr. and Mrs. Allen A. Hamood
 Dr. and Mrs. Youssef Hanna
 Ms. Katherine Hanway
 Ms. Rola Harajli
 Mr. and Mrs. Samih Harb
 Dr. Walid A. Harb
 Mr. Tahha N. Harp
 Mr. and Mrs. Isa Hasan
 Mr. Ali Hijazi
 Ms. Theresia Huber
 Ms. Heather Hussin
 Dr. Fuad Ibrahim
 Ms. Fadia Ismaiel
 Mr. and Mrs. Salaheddine Issa
 IVF Michigan PC
 Mr. Hassane and
 Mrs. Siham Jaafar
 Mr. Umesh Jadhav
 Michele Jarrait
 Ms. Sonya Kassis
 Kettering University
 Ms. Dolla Khalife
 Mr. Ali Khanafar
 Dr. Fuad F. Khaznehkatbi
 Mr. Haissam Khouri
 Ms. Muna Khoury
 Dr. Rana Khoury

Dr. Elie and Mrs. Farida Khoury
 Mr. Paul N. Khoury
 Mr. and Mrs. William Koepke
 Mrs. Alma Koprencka
 Dr. Lana Koua
 Ms. Chirin Kudeimati
 La Pita Restaurant
 Mrs. Joanna Ladki
 Ms. Kristin M. LaLonde
 Lawrence Technological University
 Legal Aid and Defender Association
 Manara Travel Agency
 Judge Anthony J. Mansour, Esq.
 Mrs. Jeanette Mansour
 Dr. Nicolas Marsheh
 Ms. Samia Masri
 Mr. Oussama Masrizada
 Surlena McNeal
 Ms. Emirene Mendoza
 Mercedes-Benz of St. Clair Shores
 Michigan Environmental Council
 Ms. Vanita Mistry
 Mr. Lee Mitchel
 Mr. Jamal Y. Mohanesh
 Mr. Albert Mokhiber
 Mr. and Mrs. Hadi Akeel
 Ms. Amal Mudallali
 Ms. Lydia Muller
 Mrs. Turkia Awada Mullin
 Mr. Pierre Najjar
 Ms. Sara Najjar-Wilson
 Ms. Susan Nakhleh
 Mr. Rafael Narbaez
 Ms. Donna Niester
 NLTB Inc.
 Ms. Arjunia Oakley
 Mr. Anis Okab
 Orchards Children's Services
 Ms. JoAnn Osman
 Dr. and Mrs. Mohammad I. Othman
 Dr. Mohamed Othman
 Papaya Fruit & Grocery
 Mr. John Peters
 Philadelphia INS Co.
 Print Xpress
 Ms. Margaret Sind Raben
 Jeff and Huda Karaman Rosen
 Dr. Aleya Rouchdy
 Mrs. Fatin F. Roumayah
 Mr. and Mrs. Nadim M. Saab
 Mrs. Fatmeh Saad

Our deepest gratitude to our 2009-2010 DONORS

(Oct. 1, 2009 – Sept. 30, 2010)

Mr. Mohammad N. Sabbagh
Mr. Hani Sabbagh
Mr. and Mrs. Haitham Safo
Ms. Anisa Sahoubah
Ms. Grace H. Said
Ms. Jumana Salamey
Mr. Bassel Salman
Mrs. Wisal Samaha
Ms. Emiliana Sandoval
Dr. Saad A. Sanyurah
Ms. Celia Shallal
Mr. and Mrs. Abdallah Shanti
Mr. Elias Sharba and
Ms. Rajaa Haidar
Ms. Aryah Shayota
Mr. David Shink
Mr. and Mrs. Yehia H. Shousher
Ms. Kim Silarski and
Mr. Martin Bandyke
Ms. Dolores Slowinski
Ms. Rima Soueidan
Ms. Rita Stephan
Mr. and Mrs. Thomas R. Stevick
Mr. James Stokes
Dr. Nabil Suliman
Mr. and Mrs. Marwan Taqtaq
Mr. Abdilkhalik Thabit
Mr. George M. Tohme
Mr. and Mrs. Jacob Tonova
Haj Mohammed J. Turfe
Ms. Zeina Turk
Dr. Fawwaz T. Ulaby and
Ms. Jean Cunningham
Mr. Leon G. Vietinghoff
Ms. Mayyada Yehia and
Mr. Gamal Shalan
Ms. Ikram Yosif
Mr. Joseph Zainea

\$100 - \$249

A1 Business Products
Mr. Mohammed K. Abbas
Mr. Hani Abdallah
Mr. and Mrs. Zouher Abdel-Hak
Mr. and Mrs. Husam A.
Abdelkhaleq
Mr. & Mrs. Mohammad
Abdelsalam
Ms. Rabab Abdulhadi
Mrs. Muna Abdulrahim
Mr. Jean Abinader
Dr. Thomas Abowd
Mrs. Enam Abraham
Ms. Helena Abraham
Mr. and Mrs. Osama A. Abulhab

Ms. Majd Aburabia
Mr. Youssef Abusalam
Ms. Leslie Adadow
Ms. Jawaher Adueh
Advance Accounting & Tax
Service Inc.
Ms. Ghaisaa Afrouni
Mr. Michael Agemy
Mr. Jamiel Ahmed
Ms. Samira Ajami
Mr. and Mrs. Joseph S.
Ajlouny, Esq.
Mr. and Mrs. Suheil Ajluni
Ms. Lori-Kamleh Ajluni
Mr. and Mrs. Ray Ajluni
Mr. and Mrs. Husam Ajluni
Ms. Amal Ajluni Randolph
Dr. and Mrs. Mohammed K. Ajour
Mr. Shereef Akeel
Dr. and Mrs. Eyad Akhras
Ms. Sandy Al
Mr. and Mrs. Ab S. Al Kassim
Mr. and Mrs. Haroune B.
Alameddine
Ms. Nahed Alammari
Mr. Amain Alammari
Ms. Ara M. Alaraji
Mr. and Mrs. Riad Al-Awar
Ms. Lena Alazawi
Mr. Tuama Al-Badry
Mr. Gallal Albaneh
Ms. Farah Albaneh
Mr. Ahmed Algazaly
Mr. Abdullah Ali
Ms. Gina Ali
Ms. Lina Aljammali
Mr. Sam Allie
Ms. Anissa A. Almahdawy
Mr. and Mrs. Ali Alhamdi
Mr. Samir F. Al-Mandwee
Mr. Jafar Almosawi
Dr. Adnan Al-Murani
Mr. Amr Alsadat
Ms. Huda Alzayat
Ms. Mary Amad
Amani's Restaurant
Mr. and Mrs. Ron Amen
Mr. Ghalib Amun
Ms. Laiali Anam
Arab American Children Center
Arab American Womens
Society of GA
Mr. Nazeeh Aranki
Aress Corporation
Dr. Rakad Arraf
Artpack Services, Inc.

Arts, Beats, & Eats Foundation
Dr. and Mrs. Mowafak Asbahi
Mr. Albert Asfour
Mrs. Wael and Lubna Asi
Mr. George Asker
Mrs. Rose Assi
Ms. Rasha Atisha
Mr. and Mrs. Haidar Badreddine
Auto Tech Collision & Paint LLC
Avenue Advertising LLC
Mr. Wael Awad
Ms. Amal Ayad
Dr. and Mrs. M. Safwan Badr
Mr. Samer Bahu
Dr. and Mrs. Asad A. Bakir
Mr. and Mrs. James J. Baldocchi
Mr. Aaron Barndollar
Ms. Y Gladys Barsamian
Mrs. Sheri Bashir
Bassam A. Bassam, M.D.
Mr. Mohammad Batayneh
Mr. Ryan Bates
Mr. Moustafa Bayoumi
Mr. Ali Bazzi
Ms. Nadia K. Bazzi
Mr. Hassan Bazzi
Ms. Molly Beauregard
Mr. Oliver Berry
The Hon. and Mrs. Michael Berry
Mr. Steven Berti
Ms. Rhita Boufelliga
Ms. Zaynab Boussi
Ms. Nancy Brigham
Ms. Marina Brown
Ms. Eileen Buck
Mr. Charles T. Busse
Mr. C. D. Campbell
Mrs. Edesly Canto-Said
Ms. Zeinab Chami
Mr. Joseph Chamie
Mr. Omar Cheboub
Lee Cheresch
Ms. Brenda Childress
CINTA'S
Mr. Toby Citrin
Ms. Laura Civinskaite
Communicore
Mr. James F. Connelly
Mr. and Mrs. David C. Contoror
Ms. Jumana Cooper
Mike Corbin
Coverall North America, Inc.
Ms. Kimberly Crafton
Ms. Rich'Kelle Curney
Mr. and Mrs. Frank Cusimano
Mr. Ali Dagher

Mr. Frank Daiza
Dr. and Mrs. Hassan M. Dakroub
Ms. Kamila Dakroub
Mr. Hassen Dakroub
Mr. Peter Dale
Ms. Nada Dandan
Hajeh Mona Darwish
Dr. Ramsay Dass
Dr. and Mrs. Shukri David
Mr. Karim Dayoub
Dearborn Plaza Coney Island
Delphi Accounting & Tax
Services Inc.
Ms. Cornelia W. Dodge
Ms. Emily Doerr
Patron Edge Donation
Dr. George Doumani
Ms. Nina Drolias
Mr. Ronald Dudum
Ms. Celeste Eckmanhimanek
Ms. Nikki Edwards
Mr. Alexander Edwards
Ms. Rabiha M. Eidi
Ms. Reem El Zeino
Dr. and Mrs. Farouk El-Baz
Mr. and Mrs. Nuri El-Bedawi
Mr. Azzam and
The Hon. Charlene M. Elder
Mr. Sameh Elhady
Mr. Philip Elias
Mr. Ahmed Elshamy
Ms. Rola Elzein
Eriana Properties, Inc.
Ms. Angelita Espino
Dr. Hussam Fadhli
Mr. and Mrs. Majed Fadlallah
Mr. and Mrs. Aouni Fakhouri
Mr. Awni Fakhouri
Family Health Center &
Rehab Inc.
Dr. Riad Farah
Dr. Abir Faraj
Dr. and Mrs. Zouheir Fares
Mrs. Jumana Fawaz
Mr. Maged Fawzi
Mr. Ali Fayad
Mr. and Mrs. Allie Fayz
First Rehab Pain Management Inc.
Ms. Wanda Flaim
Fordson Market
FRD Pharmacy
Freedom House
Mr. Nabil Freige
Ms. Sumer Friedrichs
Friends of Wayne State
University

Our deepest gratitude to our 2009–2010 DONORS

(Oct. 1, 2009 – Sept. 30, 2010)

\$100 - \$249 continued

Mr. David E. Fry	Ms. Elizabeth A. Hughes	Mr. Robert L. Mabarak	Mr. Bishr Omary
Mr. and Mrs. Richard Fuher	Ms. Nerma Huskic	Mr. Jack L. Maberry	Mr. Hassaen Oseili
Ms. Silvia Gantous	Dr. Maha Hussain	Ms. Rania Mahayni	Mr. Mahmoud Othman
Mr. Aziz Ghannam	Mr. Mahmoud Hussein	Dr. Mohamad H. Majed	Mr. and Mrs. William Peck
Mr. and Mrs. Steve Ghannam	Dr. and Mrs. Khaled Imam	Sonal Makim	Ms. Susan Peel
Ms. Lisa Ghigliazza	Integrated Software Systems, Inc.	Ms. Mona Makki	Ms. Hertha Poje-Ammouni
Ms. Sandy Ghorra	Dr. and Mrs. M. S. Ismail	Mr. Hassan Makled	Mr. David Ponsart
Dr. and Mrs. Hassan Ghosn	Mr. Gjelina Ivezaj	Mr. Nayal Maktari	Ms. Tonya E. Prince
Ms. Jennifer Giering	Ms. Rachel Ivory	Ms. Joan Mandell	Dr. and Mrs. Bouchaib Rabbani
Girl Scouts of Metro Detroit	J & D Partnership	Mr. George Mann	Mr. Christiano E. Ramazzotti
Gladys Street Bar & Grill Co.	J.R. Development LLC	Mr. Jibrán Manna	Ms. Louise M. Ramsay
Ms. Miriam Glantz	Mr. and Mrs. Nazir Jaafar	Mr. Sulaiman Mansour	Mr. Obeid Rawad
Mr. and Mrs. David Fabbri	Mr. and Mrs. Mahmoud Jabbar	Marc J. Milia, M.D., P.C.	Mrs. Hanan Raza
Mr. Paul Good	Mr. Aoun M. Jaber	Marygrove College	Mr. Randall R. Reade
James M. Gray, Ph.D.	Jacqueline Jaber	Ms. Mervat Masri	Mr. Pierre Corriveau and
H&J Fish Market Inc.	Ms. Alma Jadallah	Massarani Investment Inc.	Ms. Marie Remboulis
Ms. Jinan Haba	Jani-King of Michigan, Inc.	Dr. Matta	Ms. Molly Renshaw
Dr. and Mrs. Nizam Habhab	Jantize America, Inc.	Mrs. Libby Maynard	Ms. Virginia Rice
Ms. Noreen Hafez	Mr. and Mrs. Joseph Jarjoura	Wassim Mazraany, M.D.	Ms. Katherine A. Rippe
Dr. Rana Hajjeh	Ms. Juvaria Javaid	McDonalds #11663	Ms. Jacqueline Roberge
Dr. Kazem Hak	Ms. Maxine Jones	Mr. Robert McManus	Ms. Mary Roeder
Mr. David Hales	Mr. and Mrs. Donald E. Jones	Ms. Valentina Meci	Mr. Andrew Simpson Rogers
Mr. Sheldon Halpern	Dr. Nour Jouratli	Mr. and Mrs. Bachir Meftah	Mr. Mark Rogovin
Mr. and Mrs. Wael S. Hamade	Ms. Amanda Kachur	Mr. and Mrs. George E.	Mr. Sam J. Saad III
Dr. Adnan Hammad and	Mrs. Adila Kadado	Mendenhall	Mr. Jalil Saad
Dr. Raja Rabah-Hammad	Mr. Mazen Kadi	Mr. Madjid Mesgarzadeh	Ms. Ola Saad
Ms. Amal Hammoud	Ms. Mohja Kahf	Mr. John Metcalf	Ms. May Saba
Ms. Iman Hammoud	Ms. Madiha Kana	Michigan Food & Beverage	Ms. Janan G. Saba
Mrs. Joanna Hammoud	Ms. Maha Karam	Association	Dr. Mark B. Saffer
Drs. Eric and Dina Hanby	Ms. Noha Katbi	Ms. Beatrice K. Millender	Dr. Saed Sahouri
Hanley International Academy	Ms. Anne C. Katz	Mrs. Mariam Mohamed	Mr. Atef Said
Dr. Michael Hanna	Ms. Randa Kayyali	Ms. Athra Mona	Dr. and Mrs. Karem Sakallah
Mr. Yusuf A. Hannun	Mr. and Mrs. Edward Keelean	Ms. Lynne Moran	Mr. Houmam Saker
Mr. David Hanoute	Ms. Jolanda Kenyeres-Pavlin	Mr. Elsayed Mostafa	Mr. Theodore Sakhleh
Mr. David Hanoute	Mr. Syed M. Khalid	Mr. Rami Mostafa	Ms. Lina Sakr
Hon. Katherine Hansen	Ms. Maha Khalil	Mr. Mustapha Mounajed	Mr. Haikel B. Salah
Ms. Judith Hanway	Mr. Rabih Khalil	Dr. Shajih and Mrs. Ghada	Mr. and Mrs. Hider Salah
Ms. Susan G. Haragely	Mr. Sami Khan	Muhanna	Mr. and Mrs. William Salamy
Mr. and Mrs. Fred Harb	Mrs. Jamile Khawled	Dr. Sharon Pray Muir	Mr. Hussien Saleh
Mr. Sami Harb	Dr. Mohayya Khilifeh	Mr. Michael Mumford	Mr. and Mrs. Michael Salley
Harb Dairy Inc.	Drs. Nabil and Mouna Khoury	Mr. Ricardo and Mrs. Maribel	Mr. and Mrs. James Salley
Mr. and Mrs. Thomas G. Hardy, Esq.	Ms. Hind Khraizat	Laura Munguia	Drs. Wael & Reem Salman
Ms. Nawal Harhara	Mr. Roman Kishi	Mrs. Lowla A. Musaibli	Mr. and Mrs. Nayef S. Samhat
Mrs. Norma Harp	Krasity's Medical	Mr. Mohamad Musselmani	Samira's Fashions & Furs of
Dr. H.A. Hassan	Ms. Sheryl Kubiak	Ms. Pranvera Myftiu	Grosse Pointe
Mr. Ibrahim Hassoun	Ms. Marie Kujenga	Dr. Moustafa S. Nachabe	Mr. and Mrs. James K. Sams
Ms. Rima Hassouneh	Ms. Leslie G. Lafer	Dr. Mohammed Naji, M.D.	Ms. Michele Sanchez
Dr. and Mrs. Ghaleb F. Hatem	Law Offices of Majed A.	Mr. and Mrs. Ali Nasser	Mr. Michael Sarafa, Esq.
Ms. Shukrieh Hatem	Moughni, P.L.L.C.	Naim T. Nazha, M.D., P.C.	Ms. Hanan Sareini
Dr. Aiman Hawasli	Mr. James Leacock	Mr. Mark M. Nemer	Ms. Amy Sargent
Mr. Douglas Heater	Ms. Barbara Lipscomb	Mr. Tom Niczay	Ms. Karen H. Sasahara
Ms. Gwen Hendrickson	Dr. Daniel E. Little	Mrs. Rania Nunu	Mr. Nabil Sater
Ms. Marla Herschelman	Mr. Joseph Louis	Mrs. Yvette Nwachukwu	Mr. Fayssal Sater and
Mr. Antoine Honein	Mrs. Elaine Lteif	Ms. Thaifa Obad	Mrs. Mona Sater
Mr. Anthony Hood	Ms. Huda Lutfi	Mrs. Asya Obad	Mr. Kim D. Hunter and
Ms. Nessrin Hourani	Ms. Ekhlal Lutfi	Dr. Karam Obeid	Dr. Kathryn Savoie

Our deepest gratitude to our
2009–2010 DONORS
 (Oct. 1, 2009 – Sept. 30, 2010)

Mr. Mohammed Sawaie
 Ms. Amira A. Sayed
 Mr. Moose Scheib
 Ms. Dena Scher
 Ms. May Seikaly
 Mr. Mark Setter
 Mr. and Mrs. Saad Shafie
 Mrs. Rabia Shafie
 Dr. and Mrs. Aziz B. Shalaby
 Mr. Walter C. Shamie
 Mr. Bashar Shamo
 Ms. Samar Shareif
 Ms. Shorouq Shenaq
 Mostafa Hashem Sherif, Ph.D.
 Ms. Naomi Shihab Nye
 Mrs. Mary Shihadeh
 Mr. Roger Short
 Ms. Sarah Shoucair
 Mr. and Mrs. Martin A.
 Shoushanian
 Dr. Riad S. Siada
 Mrs. Huda Siddiq
 Dr. Mohamed Siddique
 Simon Javizian Funeral Home
 Simon, Korachis, Stella &
 Zingas, P.C.
 Mr. and Mrs. Bruce H. Simpson
 Mr. George Sirdenis and Mrs.
 Wisam K. Sirdenis
 Ms. Claudia Sitto
 Mr. Mahmoud Harb and
 Ms. Nisreen Slim
 Smartlogic Inc.
 Ms. Ruth Smith
 Ms. Kelly Smith
 Mrs. Zeinab Sobh
 Mrs. Iman Sobh
 Mr. Claude Soudah
 Mrs. Nagat Souhoub
 Southeastern Michigan Health
 Association
 Ms. April Spencer
 Ms. Mavis Spencer
 Spiekermann Travel
 Services, Inc.
 Mr. Ali H. Srour
 St. Mark Coptic Orthodox
 Church
 The Hon. George C. Steeh
 Dr. Mubadda Suidan
 Ms. Nadia Sultani
 Super Greenland Market
 Superior Coney Island
 Mr. and Mrs. Masood S. Syed
 Dr. Shereen Tabrizi
 Ms. Mona Tahar

Mr. Hakam Takash
 Mr. Ayoub H. Talhami
 Ms. Dalal M. R. Tamim
 Ms. Michelle Tanzey
 Mr. Rabi Tawil
 Dr. and Mrs. Ghiath Tayeb
 Ms. Julie Taylor
 Mr. Jeffrey Taylor
 Mr. Jeffrey Taylor
 Dr. Janice J. Terry
 TruCom Communications
 Ms. Ghada Turk
 Ms. Peg Upmeyer
 Ms. Krystal VanLowe-Marable
 Ms. Cheryl Walter
 Mr. Jonathan Ward
 Mr. Abdul Wasi
 Mr. John Willems
 Ms. Stacy Witkowski
 Mr. Najib N. Yamini
 Ms. May Yassine
 Mr. and Mrs. Ali A. Yassine
 Mr. Khaliph Young
 Mr. Ashraf A. Zahr
 Ms. Kadygah Zandani
 Mr. Mohammad Zarka
 Mr. Raymond E. Zbacnik

In-Kind Donors

Alberta Z. Abbott
 Mr. and Mrs. F. Murray Abraham
 Ms. Wendy Acho
 Mounir Afrangi
 Ms. Camille B. Alawan
 Mr. Ali Baleed Almaklani
 Mr. Robert W. Ankeny
 Ms. Vicki E. Ashker
 Drs. Adnan and Barbara Aswad
 Mr. Victor Atiyeh
 Mr. Gary Awad
 Mr. Sayed Badreya
 Governor John Baldacci
 Mr. Douglas Baum
 Mr. Lindy N. Berry
 Mr. Steven Berti
 Byblos Banquets
 Mr. Michael F. Canasi
 Comcast
 Mr. Milton Dabagia
 Ms. Marion Darwish
 Mr. James J. David
 Hanah Diab
 Mr. Nadeem Dlaikan
 Dr. Halim El Dabh
 Mr. and Mrs. Raff G. Ellis
 Ms. Sheila Esshaki
 Mr. Robert N. Fayz
 Ford Foundation
 Ms. Delores George
 Google
 Dr. Barbara Grater
 Hayat Gul
 Mr. Joseph Haiek
 Mr. Ray Hanania
 Ms. Julia F. Haragely
 Mr. Sam Hassan
 Mr. Eugene K. Hassan
 Dr. Faleh and Mrs. Alya Hussein
 Hon. Teresa Ann Issac
 Ms. Maria Jarrous
 KaBOOM!
 Ms. Lila Kada
 Ms. Amal Karzai
 Lowe's
 Luminato
 Dr. and Mrs. Abdul Mahfouz
 Dr. Clovis Maksoud
 Mr. and Mrs. Riad Mansour
 Ms. Ellen N. Maroun
 Ms. Christa McAuliffe
 Mr. and Mrs. James McMath
 Medawar Fine Jewelry
 Mr. Bill Mokdad

Huseime Moslimani
 Mr. Alex Moslimani
 Ms. Alice Naimy
 Mr. Roy Nowak
 Ollie's
 Mr. Gregory Orfalea
 Othman Othman
 Mr. Victor Papakhian
 People's Community Services
 Pistons-Palace Foundation
 Mrs. Geraldine Saad Ruddy
 Ms. Grace H. Said
 Mr. Charles A. Said
 Mr. Fred Saigh
 Atty. and Mrs. George Salem
 Ms. Lila J. Samosiuk
 Mrs. Betty H. Sams
 Shadia Ent.
 Faisal Shajira
 Mrs. and Mr. Holly Shaker
 Ms. Rita Stephan
 Superior Coney Island
 T E S Consultants, PC
 Sami Tabet
 Mr. Tom Talbot
 Ms. Victoria L. Tamoush
 The Oasis Hot Tub Gardens
 Ms. Anna Thomas
 Haj Mohammed J. Turfe
 Ms. Faye Vangel
 Ms. Amelia H. Wilhelm
 Mr. and Mrs. George Zahr
 Mr. Elias Zerhouni M.D.
 Dr. Ahmed Zewail
 Dr. James Zogby
 Ms. Helen Zughaib

Our special thanks to our
**COMMITTEE MEMBERS
 & PARTNERS**
 (Oct. 1, 2009 – Sept. 30, 2010)

**Arab American National Museum
 National Advisory Board**

Executive Board

Shamel Rushwin, Chair	Ismael Ahmed
Manal Saab, Co-Chair	Patricia Mooradian
	Fawwaz Ulaby

Honorary Members

His Excellency Badr Al-Dafa	Ambassador Yousif B. Ghafari
Her Majesty Queen Noor Al-Hussein	Casey Kasem
Congressman Charles Boustany	Kathy Najimy
Jamie Farr	Jacques Nasser
Congressman Darrell Issa	Congressman Nick Rahall
Congressman Chris John	Tony Shalhoub
	Senator John Sununu
	Helen Thomas

National Advisory Board

Richard A. Abdoo	Irene A. Hirano
Rashid Abdu	Ghada Irani
Jane Abraham	Abdeen M. Jabara
Rosette Ajluni	James Jabara
Malek Akkad	Asaad Kelada
Suleiman Al-Awadhi	Mona Khalidi
Nicola M. Antakli	Philip S. Khoury
Nazeeh Aranki	Ronald G. Khoury
Bassam Barazi	Marnia Lazreg
Yahya M. Basha	Clovis Maksoud
Maya Berry	Albert Mokhiber
Michael Berry	Ghada M. Muhanna
Amer Bisat	Ziad S. Ojakli
Ahmad Chebbani	Wafa N. Salah
George DeBakey	George Salem
Debbie Dingell	Helen Samhan
Russell J. Ebeid	Harold Samhat
Farouk El-Baz	Betty H. Sams
Inea Bushnaq Engler	Jack Shaheen
Randa Fahmy-Hudome	Bassam Shakhshiri
Nijad Fares	Andy Shallal
W. Frank Fountain	Ann Tanous
Edward Gabriel	Ahmed Zewail
Dalia Hashad	John Zogby

**Center for
 Arab American
 Philanthropy
 Professional
 Advisory Board**

Hussien Y. Shousher, Chair
 Wadad Abed
 Dr. Ghaleb H. Daouk
 Basem Hishmeh
 Muna Hishmeh
 Ghassan Saab
 Manal Saab
 Sam J. Saad III
 Dr. Randa Mansour-Shousher
 Nareman Taha

**National Network
 for Arab American
 Communities
 (NNAAC)
 Advisory Board**

Rami Nuseir, Chair
 Sally Al-Daher, Vice-Chair
 Hatem Abudayyeh
 Sarab Al-Jijakli
 Gheed Itani
 Deepa Iyer
 Nahla Kayali
 Marwan Kreidie
 Hilary Robertson
 Chris Rominger
 Itedal Shalabi
 Nadia Tordova

Our special thanks to our
**COMMITTEE MEMBERS
 & PARTNERS**
 (Oct. 1, 2009 – Sept. 30, 2010)

**The Friends of the
 Arab American
 National Museum**

Wafa Salah, Chair
 Rima Ajlouny
 May Akkary
 Alya Alsawah
 Andria Bojrab
 Amal K. David
 Rasha Demashkieh
 Anne Dirani
 Dr. Lina Dirani
 Eman Elias
 Abir Haidar
 Alya Husseini
 Mona Ibrahim
 Siham Jaafar
 Maha Jano
 Farida Khoury
 Ghida Minkara
 Rajaa Saksouk
 Hoda Succar
 Edna Zaid

**ACCESS Community Substance Abuse Coalition (ACSAC)
 Active Members**

Rawha Abouarabi
 Councilwoman Elizabeth Agius
 David Allen
 Lila Amen
 American Cancer Society
 Annapolis High School
 Dr. Cynthia Arfken
 Sgt. Armstrong
 Dr. John Artis
 Andrea Awada-Zaiter
 Amal Ayad
 Abed Badwan
 Nina Bakri
 Dr. Jeffrey Bartold
 Corporal Jerry Blevins
 Dennis Brown
 Regina Calcagno
 Crestwood School District
 Ken Dail
 Ceasar Dakroub
 District 7 School District

Dearborn Heights Police
 Department
 Dearborn Police Department
 Dearborn Public Schools
 Mona Farroukh
 Fordson High School
 Chief Lee Gavin
 Kathy Gibson
 Ronald Gutkowski
 Hawraa Hakim
 Megan Holt
 Brighton Hospital
 Elizabeth Hughes
 Ranya Ilayan
 Jeanne Knopf
 Sabrina Kumar
 Joanna Ladki
 Jill Loewen
 Mona Makki
 Dr. Mark Menestrina
 Michigan Department of
 Community Health
 (MDCH) Tobacco Section

Michigan Multi-cultural
 Network (MCN)
 Dr. Ernest Mighine
 Hilal Nahle
 Jihad Najda
 Kelly Oginsky
 Prevention Network
 Sonji-Lynn Revis
 Dr. Virginia Rice
 Sharon Rozell
 Bashar Shamo
 Dr. Farid Shamo
 Judge Mark Somers
 Southeast Michigan Community
 Alliance (SEMCA)
 Judge David Turfe
 Dr. Laurie VanValkenburg
 Wayne County Public Health
 Department
 Wayne State University
 Theresa Webster
 Westwood School District
 Jacklin Zeidan

**Health Disparities Reduction & Minority
 Health Capacity Building Grant Partners**

Dr. Cynthia Arfken, Wayne State University College of Psychiatry
 Dr. Vernal Brand, Health Alliance Plan (HAP)
 Dr. Basim Dubaybo, St. Johns Providence Health System
 Euphemia Franklin, Michigan Multi-cultural Network (MCN)
 Dr. Mouhanad Hammami, Wayne County Public Health HHS
 Rose Khalifa, Metro Solutions
 Dr. Usama Mossallam, Henry Ford Health System
 Vicki Rakowski, American Cancer Society
 Dr. Virginia Rice, Wayne State University College of Nursing
 Paul Shaheen, Michigan State University
 Kim Sibilsky, Michigan Primary Care Association
 Dr. Michael Spencer, U of M School of Public Health
 Dr. May Yassine, Michigan Public Health Institute

**ACCESS Arab American Coalition Against
 Domestic and Sexual Abuse**

Eid A. Alwan	Alissar Harb	Carlor J. Martina
Sandy Al	Elizabeth Hughes	Hussein Musleh
Ron Amen	Marria Jarrous	Jenan Saba
Siham Awada Jaafar	Juvaria Javaid	Manal Said
Judith Barr	Reem Kaddouh	Bashar Samo
Dr. Itedal Basyouni	Trinka Klima	Suzanne Sareini
Tom Berry	Joanna Ladki	Jacqueline Steingold
Detective David Alvis	Huda Lutfi	Paradise
Maria Fakhoury	Wassim Mahfouz	
Mona Faroukh	Mona Makki	

Our special thanks to our
**COMMITTEE MEMBERS
& PARTNERS**
(Oct. 1, 2009 – Sept. 30, 2010)

**The National Network for Arab American Communities (NNAAC)
Member Organizations**

CALIFORNIA

Arab Cultural and Community Center
2 Plaza Avenue
San Francisco, CA 94116
415-664-2200 ext 17
www.arabculturalcenter.org

Access California Services
2180 W. Crescent Ave., Suite C
Anaheim, CA 92801
714-917-0440, Ext 222
www.accesscal.org

Arab Film Festival
300 Brannan St., Suite 508
San Francisco, CA 94107
415-564-1100
www.arabfilmfestival.org

Somali Community Services
586 N. First Street, Suite 212
San Jose, CA 95122
408-361-8173

TEXAS

The Arab American Cultural and Community Center
10555 Stancliff Road
Houston, TX 77099
832-351-3366
www.acchouston.org

ILLINOIS

Arab American Action Network
3148 W. 63rd Street
Chicago, IL 60629
(773) 436-6060, ext. 101
www.aaan.org

Arab-American Family Services
9044 South Octavia
Bridgeview, IL 60455
(708) 599-2237, Ext 31
arabamericanfamilyservices.org

MASSACHUSETTS

Center for Arabic Culture
P.O. Box 380789
Cambridge, MA 02238
877-222-9740
www.cacboston.org

MICHIGAN

ACCESS (Arab Community Center for Economic and Social Services)
2651 Saulino Court
Dearborn, MI 48121
313-843-2844
www.accesscommunity.org
www.nnaac.org

American Arab Heritage Council
416 North Saginaw Street
Suite 220
Flint, MI 48501
810-235-2722
www.aahcflint.org

American Syrian Arab Cultural Association
PO Box 1425
Troy, MI 48099
248-593-6662
www.asaca-usa.org

OHIO

Arab American Community Center for Economic and Social Services
11555 Lorain Avenue
Cleveland, OH 44111
216-252-2900
www.aaccess-ohio.org

PENNSYLVANIA

Philadelphia Arab American Community Development Corporation
1501 Germantown Road
Philadelphia, PA 19122
215-765-0607
www.arabamericancdc.org

Al-Bustan Seeds of Culture
526 South 46th Street
Philadelphia, PA 19143
267-303-0070
www.albustanseeds.org

NEW YORK

Alwan for the Arts
16 Beaver St., 4th Floor
New York, NY 10004
212-967-4318
www.alwanforthearts.org

The Arab American Family Support Center
150 Court Street, 3rd Floor
Brooklyn, NY 11201-6244
718-643-8000
www.aafscny.org

The American MidEast Leadership Network
25-82 Steinway St., Suite 2R
Astoria, NY 11103
347-432-4464
www.AMLN.org

Arab American Association of New York
7111-5th Avenue
Brooklyn, NY 11209
718-745-3523
www.arabamericanny.org

ACCESS of Western New York
697 Ridge Rd., Suite 205
Lackawanna, NY 14218
716-332-5901
www.accesswny.org

GEORGIA

Alif Institute
P.O. Box 29067
Atlanta, GA 30359
770-936-8770
www.alifinstitute.org

FLORIDA

The Arab-American Community Center - Orlando, FL
A.J. Maali, President
www.aaccflorida.org

NNAAC Affiliate

Arab American Institute Foundation
1600 K Street, NW, Suite 601
Washington, DC 20006
202-429-9210
www.aaiusa.org

ACCESS

Building and Program Locations

ACCESS Youth & Family Services Center

2651 Saulino Court
Dearborn, MI 48120
Phone (313) 842-7010
Fax (313) 842-5150

ACCESS One Stop Employment & Human Services Center

6451 Schaefer Rd.
Dearborn, MI 48126
Phone (313) 945-8380
Fax (313) 624-9417

ACCESS Community Health & Research Center

6450 Maple St.
Dearborn, MI 48126
Phone (313) 216-2200
Fax (313) 584-3226

ACCESS Community Health & Research Center of Macomb County

4301 East 14 Mile Road
Sterling Heights, MI 48310
Phone (586) 722-6036
Fax (586) 939-7494

ACCESS National Outreach Office

2651 Saulino Court
Dearborn, MI 48120
Phone (313) 843-2844
Fax (313) 843-0097

Arab American National Museum

13624 Michigan Avenue
Dearborn, MI 48126
Phone (313) 582-AANM (2266)
Fax (313) 582-1086
www.arabamericanmuseum.org

ACCESS Hamtramck Office

8625 Joseph Campau Avenue
Hamtramck, MI 48212
Phone (313) 875-1750
Fax (313) 871-2641

ACCESS Hope House

6470 Williamson St.
Dearborn, MI 48126
Phone (313) 582-5979
Fax (313) 582-7022



ACCESS

assisting. improving. empowering.

